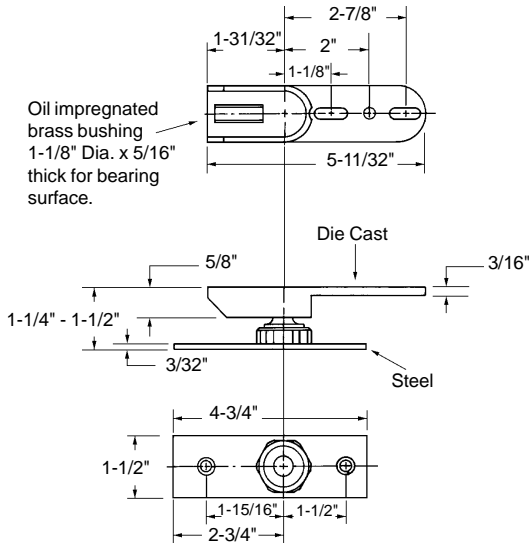


<b>Commercial Door Pivots .....</b>	<b>11-2 to 11-8</b>
<b>Flush Bolts .....</b>	<b>11-8 to 11-9</b>
<b>Mall Door Rollers, Guides &amp; Other Accessories .....</b>	<b>11-9 to 11-11</b>
<b>Hinges .....</b>	<b>11-11 to 11-13</b>
<b>Bolts, Machine Bolts, Mounting Studs .....</b>	<b>11-14 to 11-16</b>
<b>Electric Strikes .....</b>	<b>11-17</b>
<b>Maximum Security Locks &amp; Accessories .....</b>	<b>11-17 to 11-18</b>
<b>Locks, Handles &amp; Accessories .....</b>	<b>11-18 to 11-19, 11-20</b>
<b>Key Cylinders, Thumb Turn Cylinders .....</b>	<b>11-19 to 11-20</b>
<b>Commercial Door Chain .....</b>	<b>11-20</b>
<b>Door Holders, Stoppers .....</b>	<b>11-20 to 11-22</b>
<b>Door Stop Clips .....</b>	<b>11-23</b>
<b>Core Tool .....</b>	<b>11-23</b>
<b>Miscellaneous Hardware .....</b>	<b>11-23</b>
<b>Door Closers &amp; Accessories .....</b>	<b>11-24 to 11-31</b>
<b>Mail Slots .....</b>	<b>11-31 to 11-32</b>
<b>Thresholds .....</b>	<b>11-32</b>
<b>Lineals .....</b>	<b>11-32 to 11-35</b>

•Adjustable end load floor pivot set for bottom door rail channel depth of 7/8". Bottom door clearance is adjustable from 3/8" to 5/8".



**Bottom Centre Hung Door Pivot**

Part Number

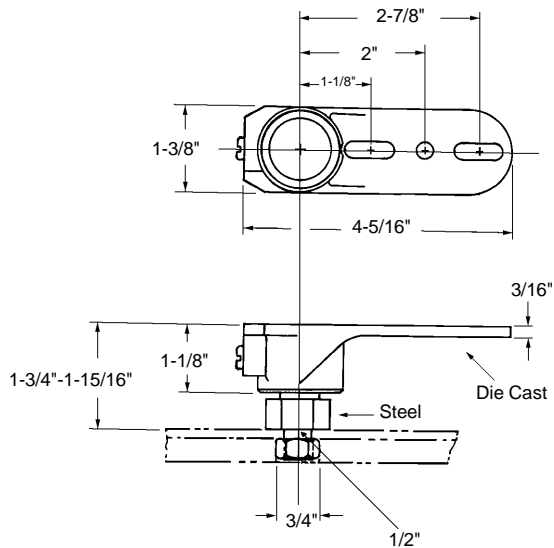
**11-1513**

Maximum Weight Capacity: 200 Lbs.

Unit: Set Bulk: 5 Sets

Manufactured By: Dorma

•Adjustable side load threshold pivot set for bottom door rail channel depth of 1-9/16". Bottom door clearance is adjustable from 3/16" to 3/8".



**Bottom Centre Hung Door Pivot**

Part Number

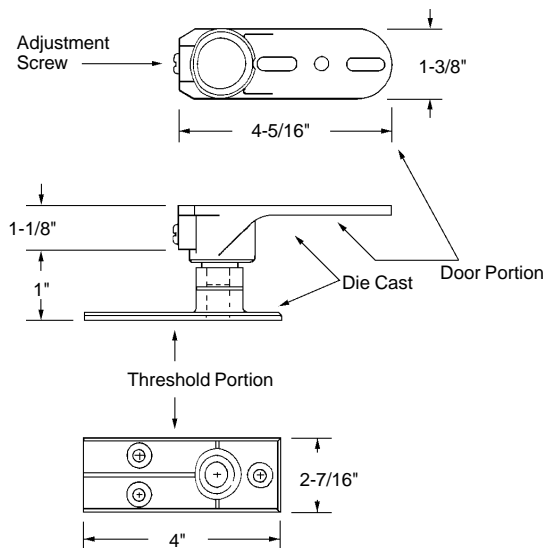
**11-1515**

Maximum Weight Capacity: 200 Lbs.

Unit: Set Bulk: 5 Sets

Manufactured By: Dorma

•Adjustable side load floor pivot set for bottom door rail channel depth of 1-15/16". Base can be shortened for 1-9/16" bottom door rail channel depth. Bottom door clearance is adjustable from 5/16" to 1/2".



**Bottom Centre Hung Door Pivot**

Part Number

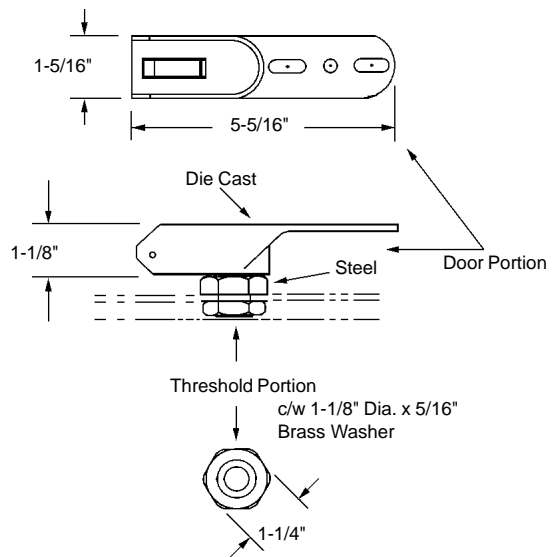
**11-1516**

Maximum Weight Capacity: 200 Lbs.

Unit: Set Bulk: 5 Sets

Manufactured By: Dorma

•Adjustable end load threshold pivot set for bottom door rail channel depth of 1-3/8". Bottom door clearance is adjustable from 3/16" to 7/16".



**Bottom Centre Hung Door Pivot**

Part Number

**11-1618**

Maximum Weight Capacity: 200 Lbs.

Unit: Set Bulk: 5 Sets

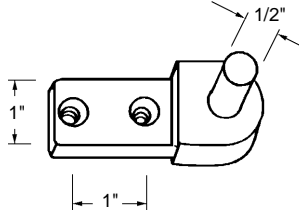
Manufactured By: Dorma

*Left Hand Shown*

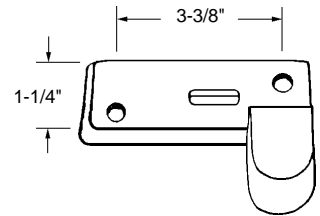
**Commercial Door Pivot Set (4 pcs.)**

Part Number      Hand  
**11-1550L**          **Left**  
**11-1550R**          **Right**  
Material: Die Cast  
Finish: Aluminum  
Unit: Set              Bulk: 15 Sets  
Used By: Commercial Aluminum

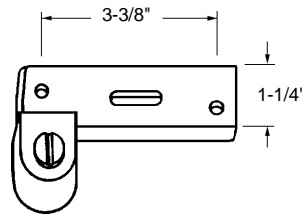
Top Frame Portion



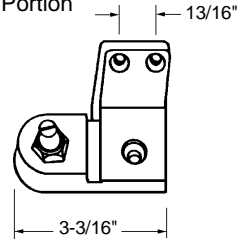
Top Door Portion



Bottom Door Portion



Bottom Frame Portion

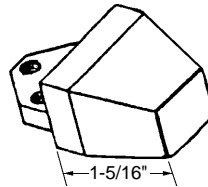


*Right Hand Shown*

**Commercial Offset Pivot Set (4 pcs.)**

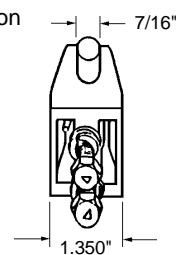
Part Number      Hand      Finish  
**11-1653L**          **Left**      **Aluminum**  
**11-1653LB**        **Left**      **Bronze**  
**11-1653R**          **Right**     **Aluminum**  
**11-1653RB**        **Right**     **Bronze**  
Material: Die Cast  
Unit: Set              Bulk: 15 Sets  
Used By: Several Manufacturers

Top Frame Portion

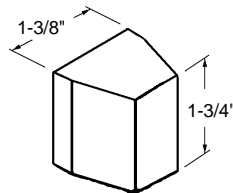


Sold separate in aluminum finish until stock runs out.  
**Part Number: 11-1650.**

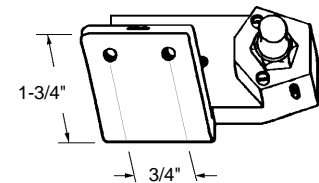
Top Door Portion



Bottom Door Portion



Bottom Frame Portion

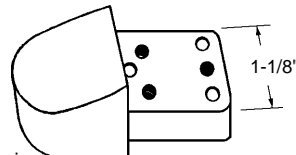


*Left Hand Shown*

**Commercial Offset Pivot Set (4 pcs.)**

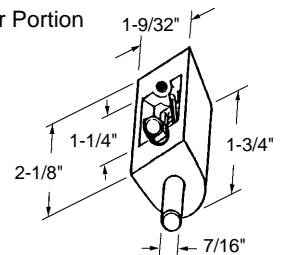
Part Number      Hand  
**11-1757L**          **Left**  
**11-1757R**          **Right**  
Material: Die Cast  
Finish: Aluminum  
Unit: Set              Bulk: 15 Sets  
Used By: Aluminex

Top Frame Portion

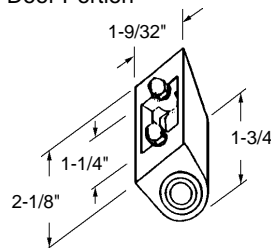


Sold separate in aluminum finish until stock runs out.  
**Part Number: 11-1754.**

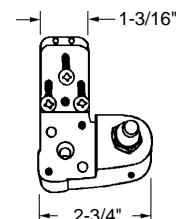
Top Door Portion



Bottom Door Portion

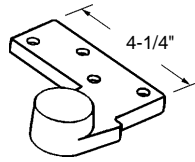


Bottom Frame Portion

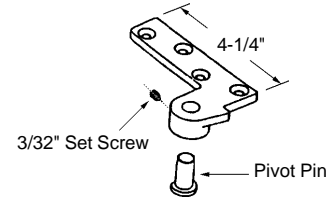


*Left Hand Shown*

Top Frame Portion



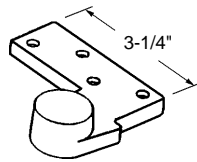
Top Door Portion



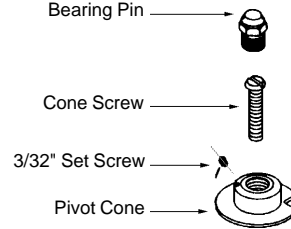
**Commercial Door Pivot Set (4 pcs.)**

Part Number      Hand  
**11-1777L**      **Left**  
**11-1777R**      **Right**  
 Material: Forged Bronze  
 Finish: Silver Painted  
 Unit: Set              Bulk: 3 Sets  
 Manufactured By: L.C.N.

Bottom Door Portion

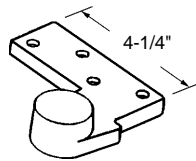


Bottom Frame Portion

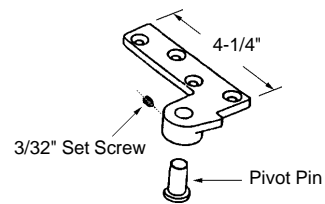


*Left Hand Shown*

Top Frame Portion



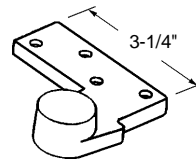
Top Door Portion



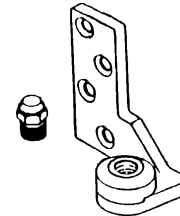
**Commercial Door Pivot Set (4 pcs.)**

Part Number      Hand  
**11-1775L**      **Left**  
**11-1775R**      **Right**  
 Material: Forged Bronze  
 Finish: Silver Painted  
 Unit: Set              Bulk: 3 Sets  
 Manufactured By: L.C.N.

Bottom Door Portion

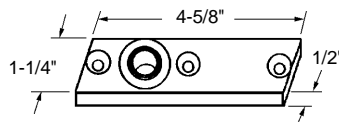


Bottom Frame Portion

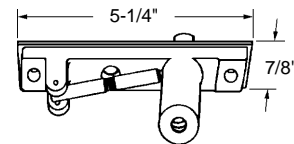


*Center Hung*

Top Frame Portion



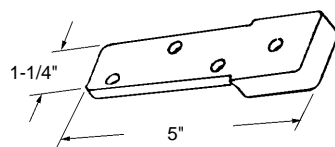
Top Door Portion



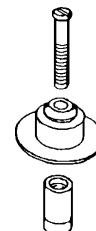
**1/2" I.D. Ball Bearing Pivot Set (4 pcs.)**

Part Number  
**11-1517B**  
 Material: Forged Bronze  
 Finish: Silver Painted  
 Unit: Set              Bulk: 3 Sets  
 Manufactured By: L.C.N.

Door Portion



Bottom Frame Portion



# COMMERCIAL HARDWARE

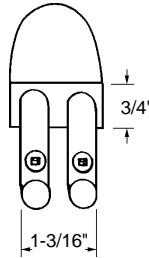
•Replaces old style Pitco pivot (discontinued).

*Left Hand Shown*

### Commercial Door Pivot Set (4 pcs.)

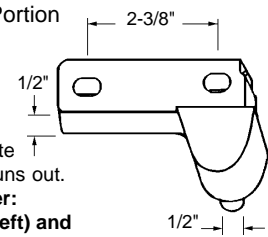
Part Number	Hand
<b>11-1750L</b>	<b>Left</b>
<b>11-1750R</b>	<b>Right</b>
Material: Die Cast	
Finish: Aluminum	
Unit: Set	Bulk: 15 Sets
Used By: Pitco	

Top Frame Portion



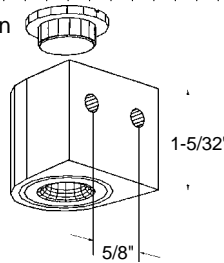
Sold separate until stock runs out.  
**Part Number: 11-1752.**

Top Door Portion

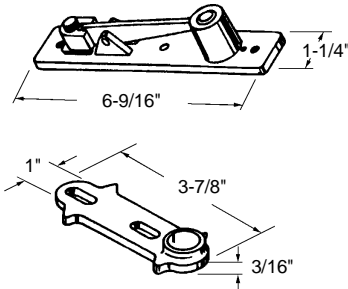
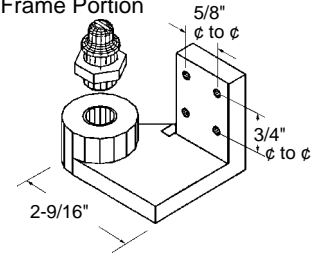


Sold separate until stock runs out.  
**Part Number: 11-1751L (Left) and 11-1751R (Right)..**

Bottom Door Portion

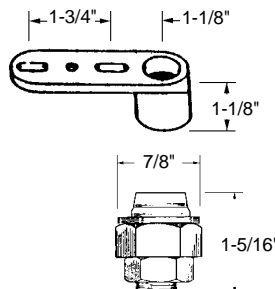


Bottom Frame Portion



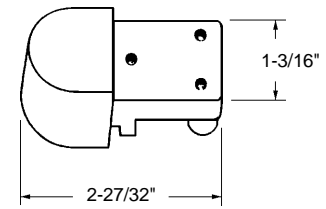
### Commercial Door Pivot — Centre Hung Top Frame & Top Door

Part Number	
<b>11-1510</b>	
Material: Aluminum/Brass Bushing	
Finish: Aluminum	
Unit: Set	Bulk: 5 Sets
Manufactured By: Jackson	



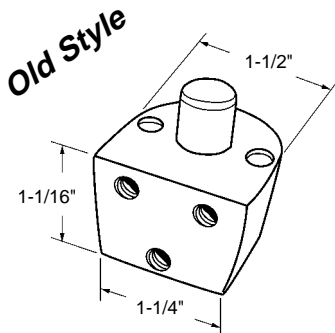
### Commercial Door Pivot — Centre Hung

Part Number	
<b>11-1512</b>	
Material: Aluminum/Brass Bushing	
Finish: Aluminum	
Unit: Set	Bulk: 5 Sets
Manufactured By: Jackson	



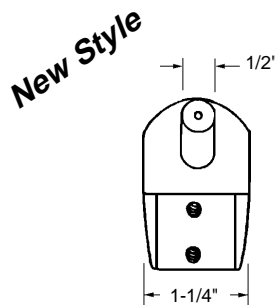
### Commercial Door Pivot — Top Frame Portion

Part Number	Finish
<b>11-1600</b>	<b>Aluminum</b>
<b>11-1600B</b>	<b>Bronze</b>
Material: Die Cast	
Unit: Each	Bulk: 15 Pcs.
Used By: Kawneer	



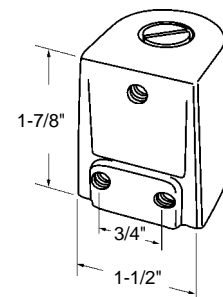
### Commercial Door Pivot — Top Door Portion

Part Number	Finish
<b>11-1601-1</b>	<b>Painted Silver</b>
Material: Die Cast	
Unit: Each	Bulk: 5 Pcs.
Used By: Kawneer	



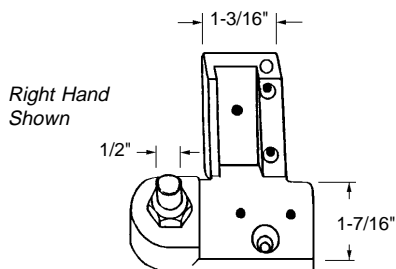
### Commercial Door Pivot — Top Door Portion

Part Number	Finish
<b>11-1601</b>	<b>Aluminum</b>
<b>11-1601B</b>	<b>Bronze</b>
Material: Die Cast	
Unit: Each	Bulk: 15 Pcs.
Used By: Kawneer	



### Commercial Door Pivot — Bottom Door Portion

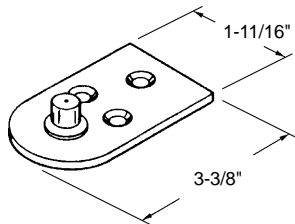
Part Number	Finish
<b>11-1602</b>	<b>Painted Silver</b>
<b>11-1602B</b>	<b>Painted Brown</b>
Material: Die Cast	
Unit: Each	Bulk: 15 Pcs.
Used By: Kawneer	



**Commercial Door Pivot —  
Bottom Frame Portion**

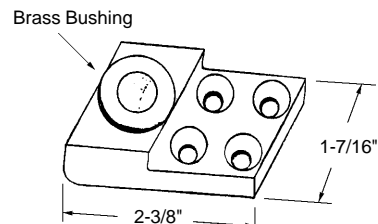
Part Number      Hand  
**11-1603L**      **Left**  
**11-1603R**      **Right**  
Material: Die Cast  
Unit: Each      Bulk: 15 Pcs.  
Used By: Kawneer

•c/w 1/2" aluminum shim, same shape as pivot (not shown).



**Commercial Door Pivot —  
Bottom Offset Frame Portion**

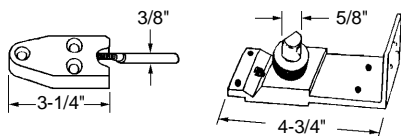
Part Number  
**11-1607**  
Material: Steel  
Finish: Natural  
Unit: Each      Bulk: 5 Pcs.  
Used By: Kawneer



**Bottom Centre Hung Pivot**

Part Number  
**11-1609**  
Material: Aluminum  
Finish: Natural  
Unit: Each      Bulk: 5 Pcs.  
Used By: Kawneer

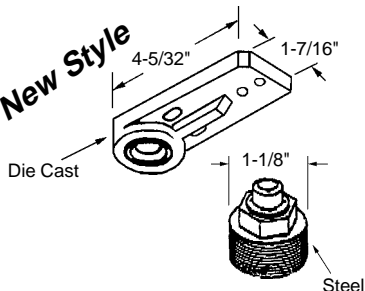
*Old Style*



**Commercial Door Pivot —  
Bottom Frame & Door Portion**

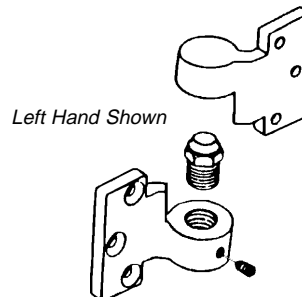
Part Number  
**11-1610**  
Material: Die Cast  
Finish: Natural  
Unit: Set      Bulk: 5 Sets  
Used By: Kawneer

*New Style*



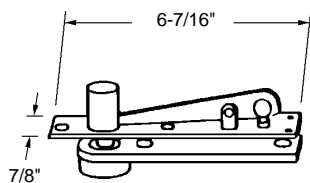
**Centre Hung Door Pivot —  
Bottom Frame & Door Portion**

Part Number  
**11-1610A**  
Material: Die Cast/Steel  
Finish: Natural  
Unit: Set      Bulk: 5 Sets  
Used By: Kawneer



**Intermediate Offset Pivot**

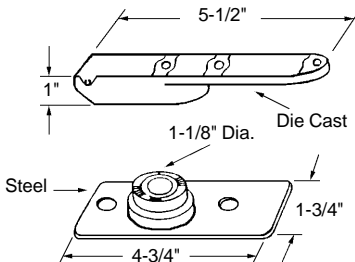
Part Number      Hand  
**11-1779L**      **Left**  
**11-1779R**      **Right**  
Material: Forged Bronze  
Finish: Silver Painted  
Unit: Set      Bulk: 3 Sets  
Manufactured By: L.C.N.



**Top Centre Hung —  
Frame & Door Portion**

Part Number  
**11-1517A**  
Material: Steel  
Finish: Brown  
Unit: Set      Bulk: 3 Sets  
Used By: Rixon

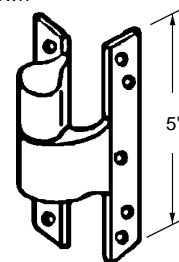
•Floor mount.  
•Adjustable.



**Centre Hung — Door & Floor Portion**

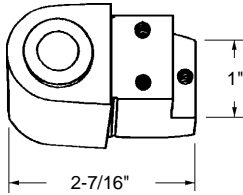
Part Number  
**11-1608**  
Material: Die Cast/Steel  
Finish: Natural  
Unit: Set      Bulk: 3 Sets  
Used By: Rixon

*Left Hand Shown*



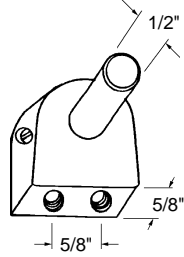
**Intermediate Pivot**

Part Number      Hand  
**11-1605L**      **Left**  
**11-1605R**      **Right**  
Material: Die Cast  
Finish: Silver Painted  
Unit: Each      Bulk: 5 Pcs.  
Used By: Several Manufacturers



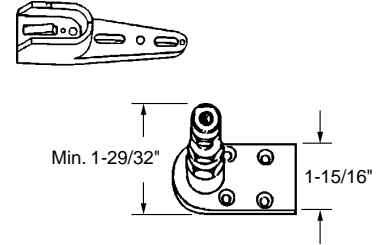
**Commercial Door Pivot —  
Top Frame Portion**

Part Number	Finish
<b>11-1500</b>	<b>Aluminum</b>
<b>11-1500B</b>	<b>Bronze</b>
Material: Aluminum	
Unit: Each	Bulk: 15 Pcs.
Used By: Zimmcor	



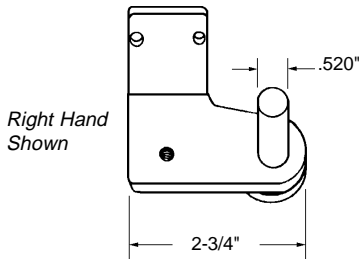
**Commercial Door Pivot —  
Top Door Portion**

Part Number	Finish
<b>11-1501</b>	<b>Aluminum</b>
<b>11-1501B</b>	<b>Bronze</b>
Material: Aluminum	
Unit: Each	Bulk: 15 Pcs.
Used By: Zimmcor	



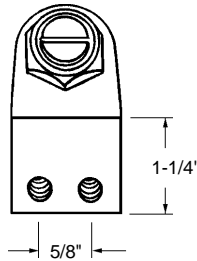
**Commercial Door Pivot —  
Bottom Door & Floor Portion**

Part Number	
<b>11-1514</b>	
Material: Die Cast/Steel	
Finish: Silver Painted	
Unit: Set	Bulk: 5 Sets
Used By: Several Manufacturers	



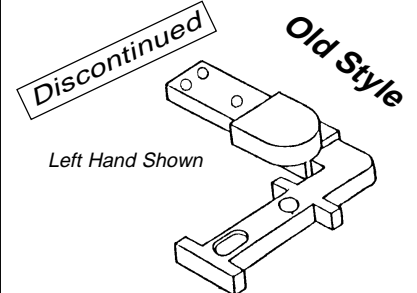
**Commercial Door Pivot —  
Bottom Frame Portion**

Part Number	Hand
<b>11-1502L</b>	<b>Left</b>
<b>11-1502R</b>	<b>Right</b>
Material: Steel	
Finish: Plated	
Unit: Each	Bulk: 15 Pcs.
Used By: Zimmcor	



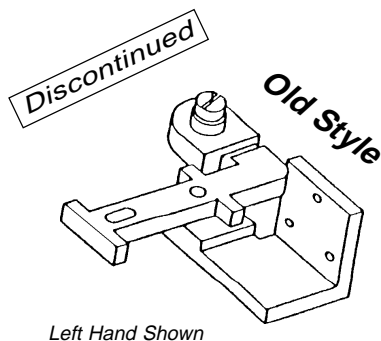
**Commercial Door Pivot —  
Bottom Door Portion**

Part Number	Finish
<b>11-1503</b>	<b>Aluminum</b>
<b>11-1503B</b>	<b>Bronze</b>
Material: Aluminum	
Unit: Each	Bulk: 15 Pcs.
Used By: Zimmcor	



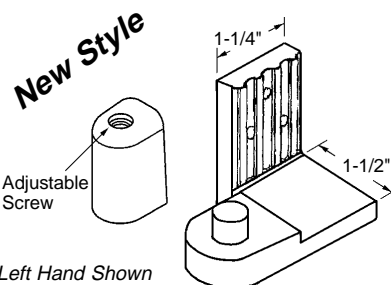
**Top Offset Pivot Assembly**

Part Number	Hand
<b>11-1700L</b>	<b>Left</b>
<b>11-1700R</b>	<b>Right</b>
Material: Extruded Aluminum	
Finish: Natural	
Unit: N/A	
Used By: Prevost	



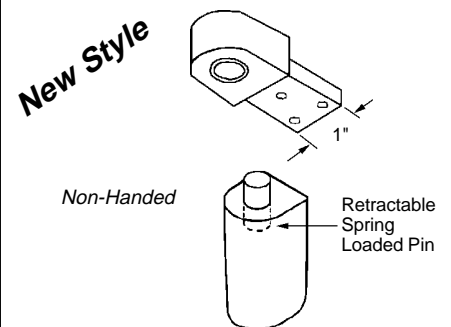
**Bottom Offset Pivot Assembly**

Part Number	Hand
<b>11-1701L/R</b>	<b>Left/Right</b>
Material: Extruded Aluminum	
Finish: Natural	
Unit: N/A	
Used By: Prevost	



**Bottom Offset Pivot Assembly**

Part Number	Hand
<b>11-1701L</b>	<b>Left</b>
<b>11-1701R</b>	<b>Right</b>
Material: Die Cast	
Finish: Silver Painted	
Unit: Set	Bulk: 5 Sets
Used By: Prevost	

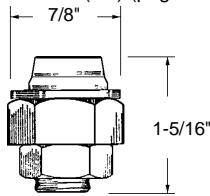


**Top Offset Pivot Assembly**

Part Number	
<b>11-1700</b>	
Material: Die Cast	
Finish: Silver	
Unit: Set	Bulk: 5 Sets
Used By: Prevost	

**Discontinued**

- Used with 11-1512D (discontinued).
- Replacement: 11-1512 (set) (page 11-4).

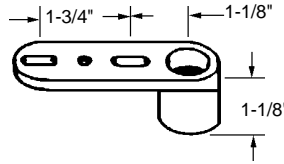


**Commercial Door Pivot — Bottom Threshold Portion**

Part Number  
**11-1512F**  
 Material: Steel  
 Finish: Natural  
 Unit: N/A  
 Used By: Zimmcor

**Discontinued**

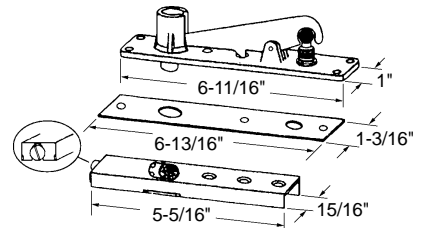
- Used with 11-1512F (discontinued).
- Replacement: 11-1512 (set) (page 11-4).



**Commercial Door Pivot — Bottom Door Portion**

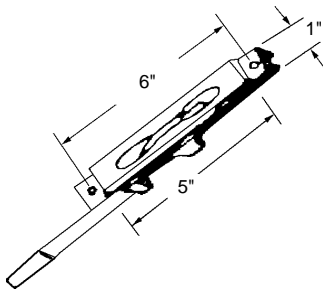
Part Number  
**11-1512D**  
 Material: Die Cast  
 Finish: Natural  
 Unit: N/A  
 Used By: Zimmcor

- Cover plate included.
- Adjustable pivot fixing plate.
- For metal or wood door application.



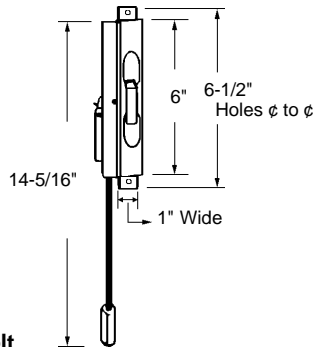
**Commercial Door Pivot — Bottom Door & Floor Portion**

Part Number  
**11-1506**  
 Material: Steel  
 Finish: Plated  
 Unit: Set                      Bulk: 5 Sets  
 Used By: Several Manufacturers



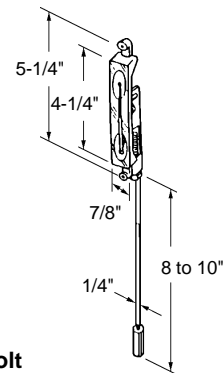
**Flush Bolt**

Part Number	Finish
<b>11-1554</b>	<b>Aluminum</b>
<b>11-1554B</b>	<b>Bronze</b>
Material: Die Cast/Steel	
Unit: Each	Bulk: 5 Pcs.
Used By: Commercial Aluminum	



**Flush Bolt**

Part Number	Finish
<b>11-1504</b>	<b>Aluminum</b>
<b>11-1504B</b>	<b>Bronze</b>
Material: Extruded Aluminum/Steel	
Unit: Each	Bulk: 10 Pcs.
Used By: Zimmcor	

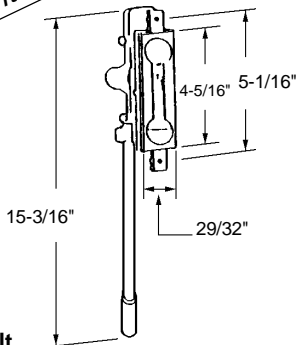


**Flush Bolt**

Part Number	Finish
<b>11-1604</b>	<b>Aluminum</b>
Material: Die Cast	
Unit: Each	Bulk: 15 Pcs.
Used By: Several Manufacturers	

**Discontinued**

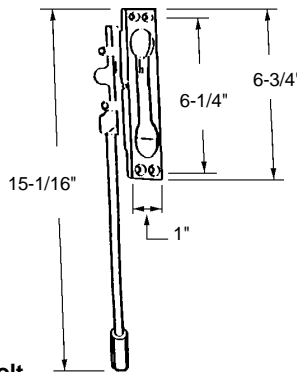
- Replacement: 11-1604 on this page.



**Flush Bolt**

Part Number	Finish
<b>11-1800</b>	<b>Satin Chrome</b>
Material: Die Cast/Steel	
Unit: N/A	
Used By: Several Manufacturers	

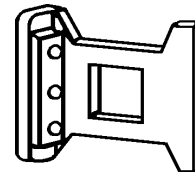
- For use on steel or wood door.



**Flush Bolt**

Part Number	Finish
<b>11-1801</b>	<b>Satin Chrome</b>
Material: Die Cast/Steel	
Unit: Each	Bulk: 10 Pcs.
Used By: Several Manufacturers	

- Fits flush bolt 11-1604 on this page.

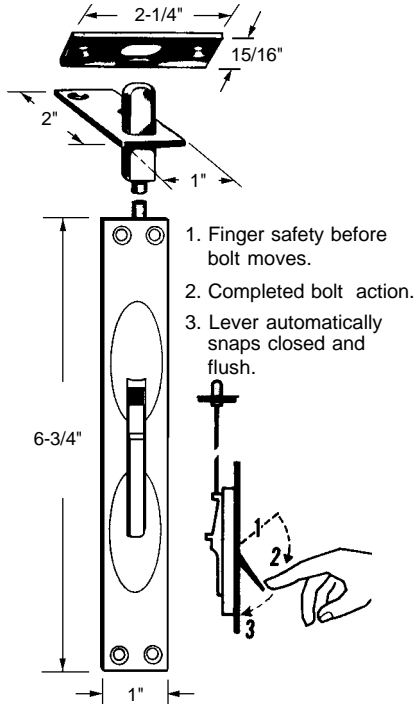


**Flush Bolt Guide**

Part Number	
<b>11-1613</b>	
Material: Plastic	
Unit: Each	Bulk: 10 Pcs.
Used By: Several Manufacturers	



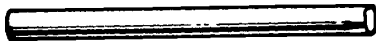
- 1" x 6-3/4" c/w 12" rod.
- Spring action both directions (open-close).
- Throw lever to within 40° angle of the face and it snaps to flush position automatically.



**Flush Bolt**

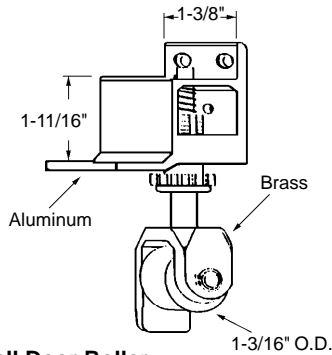
Part Number      Finish  
**11-1507**            **Satin Aluminum**  
 Material: Extruded Aluminum  
 Unit: Each            Bulk: 10 Pcs.  
 Used By: Several Manufacturers

•5/16" O.D. hollow tubing.



**Grill Door Rod**

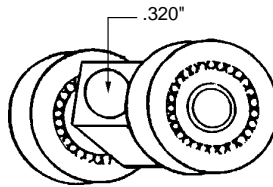
Part Number  
**11-1533 ROD**  
 Material: Aluminum  
 Stock Length: 10'  
 Unit: Foot            Bulk: 30 Ft.  
 Used By: Dynamic



**Mail Door Roller**

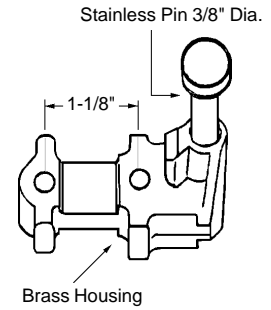
Part Number  
**11-1555**  
 Housing: Aluminum  
 Wheel: Nylatron Ball Bearing  
 Unit: Each            Bulk: 3 Pcs.  
 Used By: Commercial Aluminum

- Overall width of carriage: 1-1/64".
- ø to ø of wheels running surface: 3/4".



**Grill Door Roller**

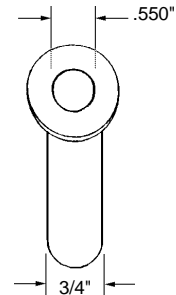
Part Number      Roller O.D.  
~~11-1533~~            ~~4" O.D.~~ (Discontinued)  
**11-1533A**        **1-1/8" O.D. x 9/32" wide**  
 Housing: Aluminum  
 Wheel: Nylon Ball Bearing  
 Unit: Each            Bulk: 5 Pcs.  
 Used By: Dynamic



**Top Guide Housing & Pin**

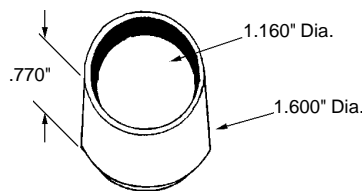
Part Number  
**11-1556**  
 Material: Brass  
 Unit: Each            Bulk: 3 Pcs.  
 Used By: Commercial Aluminum

- Spring inside receptacle.
- Length: 2-5/8".



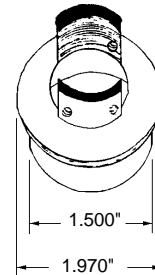
**Grill Pin Receptacle**

Part Number  
**11-1532**  
 Material: Steel  
 Unit: Each            Bulk: 5 Pcs.  
 Used By: Dynamic



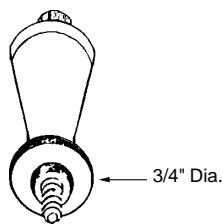
**Grill Door Cylinder Ring**

Part Number  
**11-2022A**  
 Material: Aluminum  
 Finish: Black Painted  
 Unit: Each            Bulk: 5 Pcs.  
 Used By: Dynamic

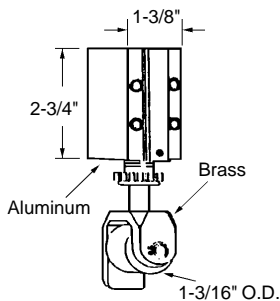


**Grill Door Cylinder Ring**

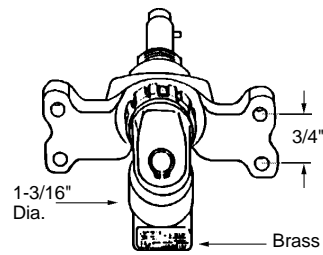
Part Number  
**11-2022**  
 Material: Aluminum  
 Unit: Each            Bulk: 5 Pcs.  
 Used By: Dynamic



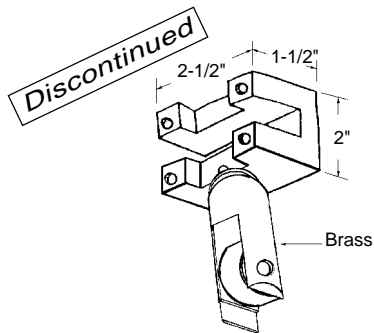
**Grill Door Flush Bolt Release Knob**  
 Part Number  
**11-1535**  
 Material: Machined Metal  
 Unit: Each      Bulk: 5 Pcs.  
 Used By: Dynamic



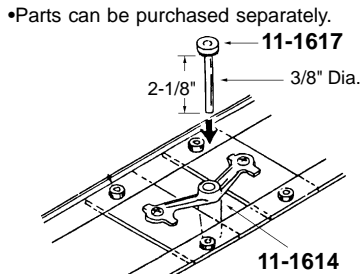
**Mall Door Roller — Outboard**  
 Part Number  
**11-1528**  
 Housing: Aluminum/Brass  
 Wheel: Nylatron Ball Bearing  
 Unit: Each      Bulk: 3 Pcs.  
 Used By: Kawneer



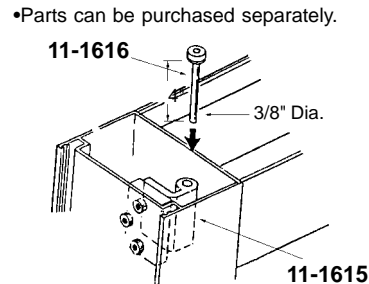
**Mall Door Roller — Inboard**  
 Part Number  
**11-1529**  
 Housing: Die Cast  
 Wheel: Nylatron Ball Bearing  
 Unit: Each      Bulk: 3 Pcs.  
 Used By: Kawneer



**Stacking Door Roller**  
 Part Number  
**11-1526**  
 Housing: Aluminum  
 Wheel: Steel  
 Unit: N/A  
 Used By: Zimmcor

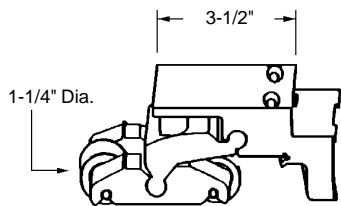


**Inboard Assembly**  
 Part Number      Description  
**11-1614**      Head Guide Housing  
**11-1617**      Head Guide Pin  
 Housing: Die Cast  
 Pin: Steel  
 Unit: Each      Bulk: 5 Pcs.  
 Used By: Kawneer

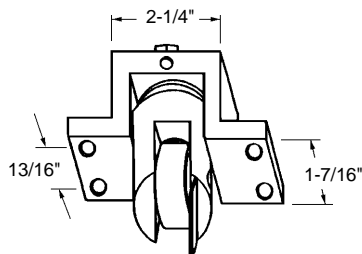


**Recessed Assembly**  
 Part Number      Description  
**11-1615**      Head Guide Housing  
**11-1616**      Head Guide Pin  
 Housing: Die Cast  
 Pin: Steel  
 Unit: Each      Bulk: 5 Pcs.  
 Used By: Kawneer

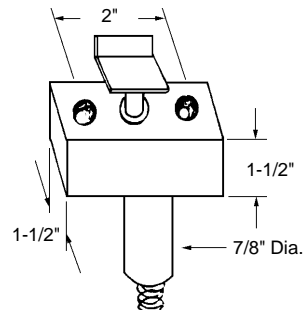
•Replacement wheel: 4-114 on page 4-8.



**Multi-Track Mall Door Roller**  
 Part Number  
**11-1527**  
 Housing: Aluminum  
 Wheel: Steel  
 Unit: Each      Bulk: 3 Pcs.  
 Used By: Zimmcor



**Brass Guide**  
 Part Number  
**11-1525**  
 Material: Aluminum/Brass  
 Unit: Each      Bulk: 3 Pcs.  
 Used By: Zimmcor

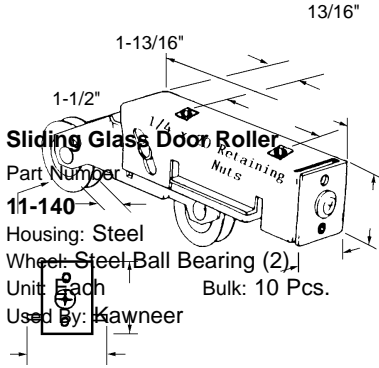


**Swivel Leader**  
 Part Number  
**11-1518**  
 Material: Aluminum  
 Unit: Each      Bulk: 3 Pcs.  
 Used By: Zimmcor

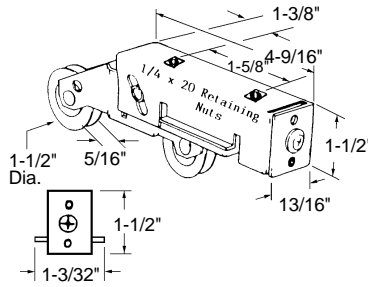
**COMMERCIAL HARDWARE**

1-1/2" 5/16"  
O.D.

1-13/16"

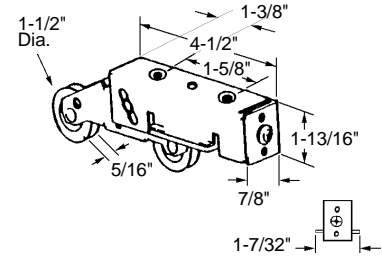


**Sliding Glass Door Roller**  
Part Number **11-140**  
Housing: Steel  
Wheel: Steel Ball Bearing (2)  
Unit: Each Bulk: 10 Pcs.  
Used By: Kawneer



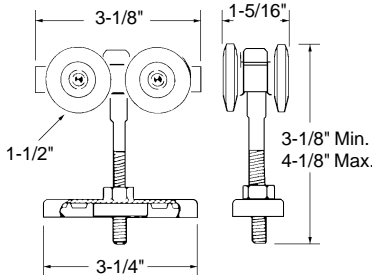
**Sliding Glass Door Roller**

Part Number  
**11-141**  
Housing: Steel  
Wheel: Steel Ball Bearing (2)  
Unit: Each Bulk: 10 Pcs.  
Used By: Several Manufacturers



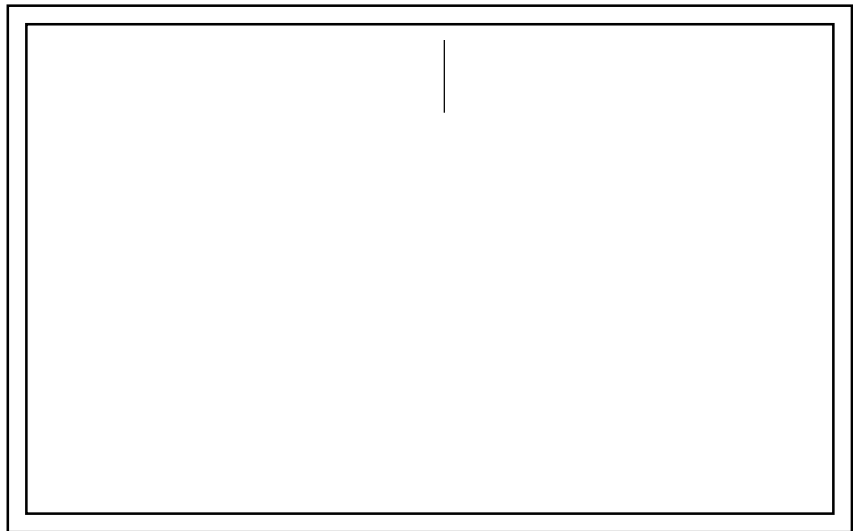
**Sliding Glass Door Roller**

Part Number  
**11-128**  
Housing: Steel  
Wheel: Steel Ball Bearing (2)  
Unit: Each Bulk: 10 Pcs.  
Used By: Several Manufacturers



**Commercial Rollers**

Part Number  
**11-1751**  
Housing: Steel  
Wheel: Nylon Ball Bearing (4)  
Maximum Weight: 200 lbs.  
Unit: Each Bulk: 5 Pcs.  
Used By: Several Manufacturers



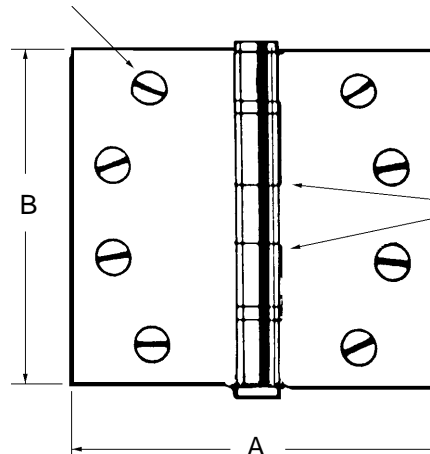
- c/w machine and wood screws.
- Grind corners to suit radius.
- Non-removable pins available on request.
- Six or eight mounting holes per hinge.
- Purchased individually.

**Ball Bearing Mortise Butt Hinges**

Part Number	Finish	Size (A x B)
<b>11-SN1810C</b>	<b>Satin Nickel</b>	<b>3-1/2" x 3-1/2"</b>
<b>11-SN1810B</b>	<b>Satin Nickel</b>	<b>4" x 4"</b>
<b>11-SN1810A</b>	<b>Satin Nickel</b>	<b>4" x 4-1/2"</b>
<b>11-SN1810D</b>	<b>Satin Nickel</b>	<b>4-1/2" x 4-1/2"</b>
<b>11-SN1810DNRP</b>	<b>Satin Nickel</b>	<b>4-1/2" x 4-1/2"</b>
(non-removable pin)		
<b>11-D1810B *</b>	<b>Duronodic</b>	<b>4" x 4"</b>
<b>11-D1810A *</b>	<b>Duronodic</b>	<b>4" x 4-1/2"</b>

Material: Steel  
Unit: Each Bulk: 15 Pcs. \*10 Pcs.  
Used By: Several Manufacturers

ALL HOLES DRILLED & COUNTERSUNK



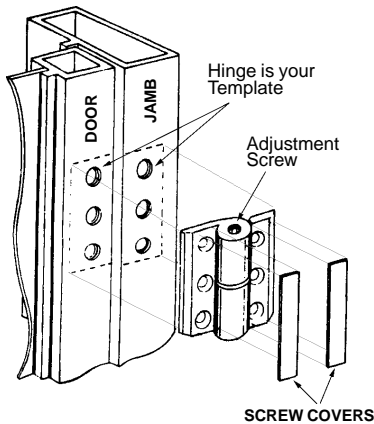
BALL BEARINGS, PERMANENTLY LUBRICATED. NON-DETACHABLE TYPE, SOLID STAINLESS STEEL CASSED.

- Quick installation.
- Instant adjustment.
- Permanent lubrication.
- Heavy duty service.
- Security feature — *non-rising pin*.
- Complete universal kit.

### INSTALLATION INSTRUCTIONS

Special Note: Place top hinge with adjustment screw facing up.  
Place bottom hinge with adjustment screw facing down.

#### REMOVE OLD HINGE, SET PROPER CLEARANCE



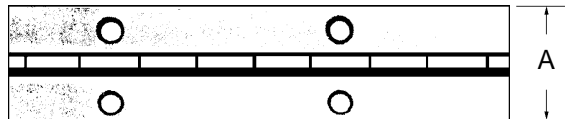
#### Each Repair Kit Contains:

- Two (2) ball bearing hinges.
- Four (4) screw covers.
- Two (2) shim plates.
- One (1) Allen wrench.
- Twelve (12) tamper-proof screws.
- Complete instructions.

### Ball Bearing Surface Mount Hinges

Part Number      Finish  
**11-1813**            **Aluminum**  
**11-1813B**          **Bronze Anodized**  
 Material: Aluminum  
 Unit: Set            Bulk: 5 Sets  
 Used By: Several Manufacturers

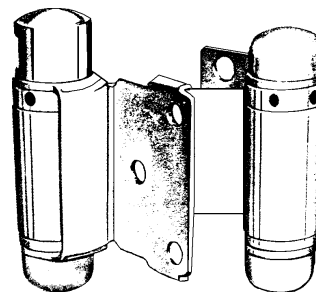
Refer to page 11-12 for continuous hinge retrofit alternative.



### Piano Hinge

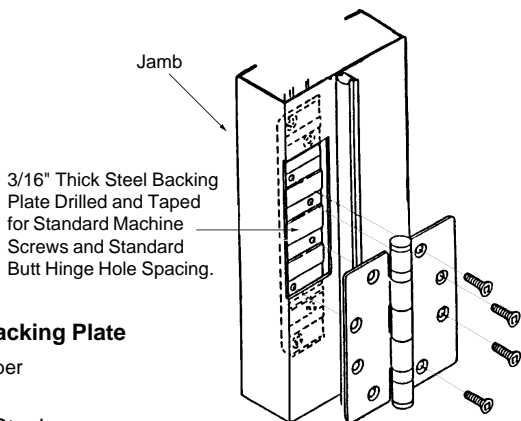
Part Number      "A" Measurement  
**11-2162**            **1-1/16"**  
**11-2163**            **1-1/2"**  
 Material: Stainless Steel  
 Stock Length: 6'  
 Unit: S/L            Bulk: 5 S/L  
 Used By: Several Manufacturers

- For doors 1-1/8" to 1-1/2" thick.
- 2" high flange.
- Other sizes available.



### Double Action Door Hinge

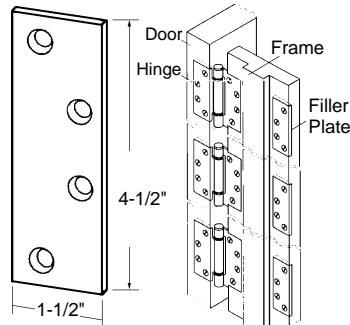
Part Number  
**11-5037**  
 Material: Steel  
 Maximum Weight: 18 lbs. per Door  
 Maximum Width: 18" per Door.  
 Colour: Black  
 Unit: Pair            Bulk: 5 Pair  
 Used By: Several Manufacturers



### Hinge Backing Plate

Part Number  
**11-1818**  
 Material: Steel  
 Finish: Plated  
 Thickness: 3/16"  
 Unit: Each            Bulk: 10 Pcs.  
 Used By: Several Manufacturers

- To fill 4-1/2" x 4" and 4-1/2" x 4-1/2" cutouts where hinges have been removed.



### Butt Hinge Filler Plate

Part Number      Finish  
**11-1802WH**        **White**  
**11-1802ZI**        **Zinc Plated**  
 Material: Steel  
 Thickness: 9/64" (3.4mm)  
 Unit: Each            Bulk: 20 Pcs.  
 Used By: Several Manufacturers

# CONTINUOUS GEARED HINGES

•Continuous hinges are manufactured of extruded 3063-T6 aluminum alloy/temper and consist of three interlocking extrusions in a pinless assembly. These hinges have been certified functional after testing per ANSI 15601 over 1,500,000 cycles with a standard duty, full mortise hinge and a 150 lbs. door. UL-Fire rating is 90 minutes.

**Other Features:**

- U.L. and U.L. Canada listed.
- 20% more aluminum at stress points.
- Anodized after milling and drilling.
- Concealed thrust bearings.
- Templated fastener pattern.
- Full door/frame height.
- No mortising.
- No door sagging or binding.
- Ideal for heavy doors.
- Non-handed.
- Installation instructions.

**SECURITY • SAFETY**

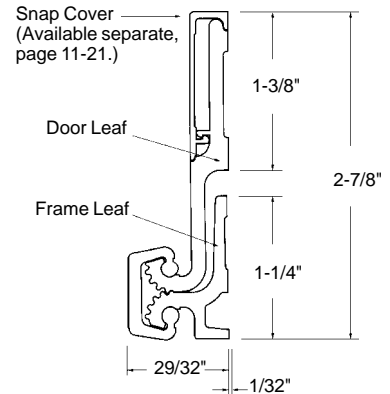
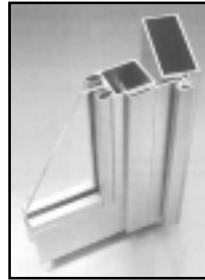
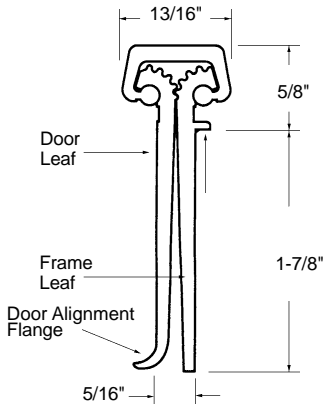
- Continuous geared hinge creates a high degree of security for any opening or restricted area. The geared construction and full-length channel cap seal the common gap between the door and frame and provide security against prying.
- Closing the common gap between the door and frame provides safety against pinched fingers for doors in public areas, particularly those areas where children are present.

**Full-Mortise Applications:**

1. New construction — a) New door and frame.
  2. Renovations — a) New door and frame. b) New door with existing frame. c) Existing door with new frame.
- \*The mortise hinge will cover the existing butt hinge preps.

**Full-Surface Applications:**

1. New construction — a) New door and frame.
2. Renovations — a) New door and frame. b) New door with existing frame. c) Existing door with new frame. d) Where door must swing completely out of the frame opening.
3. Retrofit — a) Existing door and existing frame. b) New door and existing frame. c) Existing door with new frame. d) Where door must swing completely out of the frame opening.



STANDARD DUTY HINGE		
Size	Bearings	Weight
83"	14	280 lbs.
HEAVY DUTY HINGE		
Size	Bearings	Weight
83"	27	540 lbs.

**Full Mortise Continuous Geared Hinge**

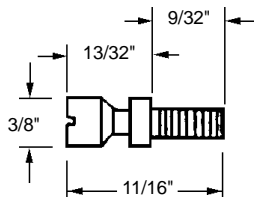
Part Number	Finish	Duty
11-FM-AL	Aluminum	Standard
11-FM-AL-HD	Aluminum	Heavy
11-FM-DURO	Duronodic	Standard
11-FM-DURO-HD	Duronodic	Heavy

Material: Extruded Aluminum  
 Length: 83"  
 Unit: Each      Bulk: 10 Pcs.  
 Used By: Several Manufacturers

**Full Surface Mount Continuous Geared Hinge**

Part Number	Finish	Duty	Length
11-FS-AL	Aluminum	Standard	83"
11-FS-AL-95	Aluminum	Standard	95"
11-FS-AL-HD	Aluminum	Heavy	83"
11-FS-AL-HD-95	Aluminum	Heavy	95"
11-FS-DURO	Duronodic	Standard	83"
11-FS-DURO-95	Duronodic	Standard	95"
11-FS-DURO-HD	Duronodic	Heavy	83"
11-FS-DURO-HD-95	Duronodic	Heavy	95"

Material: Extruded Aluminum  
 Unit: Each      Bulk: 10 Pcs.  
 Used By: Several Manufacturers



**Panic Bar Bolt — 1/4" N.C.**

Part Number

**11-2116**

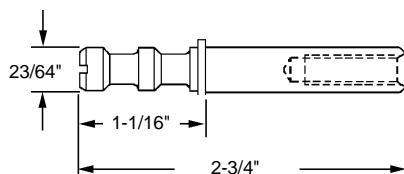
Material: Steel

Unit: Each

Bulk: 10 Pcs.

Used By: Jackson

•For back to back pulls.



**Tandem Cone Mounting Stud**

Part Number

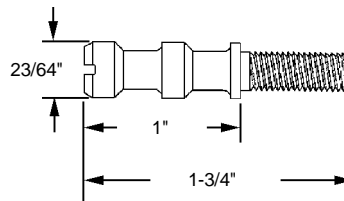
**11-2123**

Material: Steel/Zinc Plated

Unit: Each

Bulk: 20 Pcs.

Used By: Kawneer



**Tandem Cone Mounting Stud**

Part Number

**11-2124**

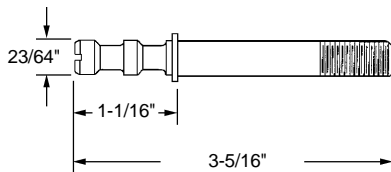
Material: Steel/Zinc Plated

Unit: Each

Bulk: 20 Pcs.

Used By: Kawneer

•For push/pull combination.



**Push/Pull Machine Bolt**

Part Number

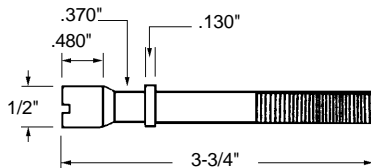
**11-2125**

Material: Steel/Zinc Plated

Unit: Each

Bulk: 20 Pcs.

Used By: Kawneer



**Push/Pull Machine Bolt — 3/8" N.C.**

Part Number

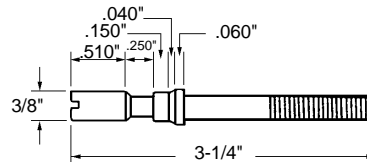
**11-2100**

Material: Zinc

Unit: Each

Bulk: 5 Pcs.

Used By: Several Manufacturers



**Push/Pull Machine Bolt — 5/16" N.C.**

Part Number

**11-2101**

Material: Steel

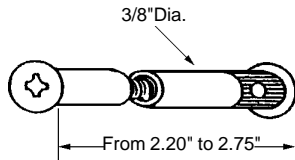
Unit: Each

Bulk: 5 Pcs.

Used By: Several Manufacturers



**VACUUM CUPS  
SECTION 1**



**Chicago Bolt — 1/4" N.F.**

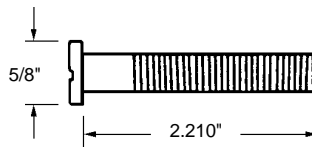
Part Number

**11-2103**

Material: Aluminum

Unit: Each Bulk: 5 Pcs.

Used By: Several Manufacturers



**Push Bar Bolt — 3/8" N.C.**

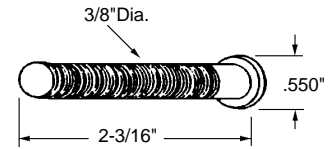
Part Number

**11-2104**

Material: Aluminum

Unit: Each Bulk: 5 Pcs.

Used By: Several Manufacturers



**Push Bar Machine Screw — 3/8" N.F.**

Part Number

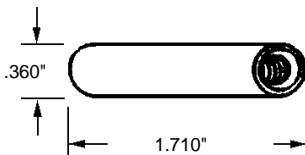
**11-2105**

Material: Aluminum

Unit: Each Bulk: 10 Pcs.

Used By: Several Manufacturers

•Threaded steel tube.



**Pull Through Bolt — 1/4" N.C.**

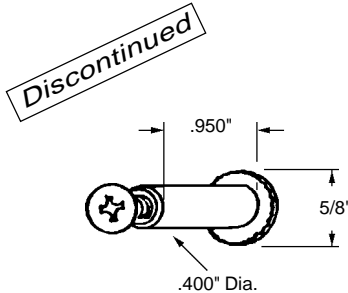
Part Number

**11-2106**

Material: Steel

Unit: Each Bulk: 5 Pcs.

Used By: Several Manufacturers



**Door Closer Through Bolt — 1/4" N.C.**

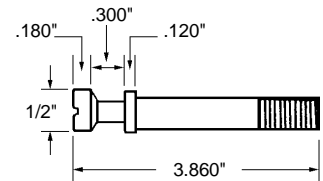
Part Number

**11-2107**

Material: Steel

Unit: N/A

Used By: Several Manufacturers



**Push/Pull Machine Bolt — 3/8" N.F.**

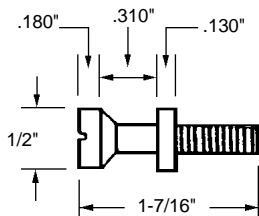
Part Number

**11-2108**

Material: Steel

Unit: Each Bulk: 10 Pcs.

Used By: Several Manufacturers



**Panic Bar Bolt — 1/4" N.C.**

Part Number

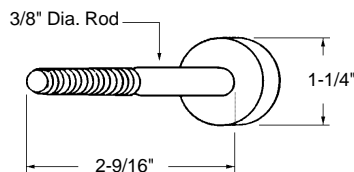
**11-2109**

Material: Steel

Unit: Each Bulk: 5 Pcs.

Used By: Several Manufacturers

•Chrome head with 2-1/8" dia. holes, 3/4"  $\phi$  to  $\phi$ .



**Push Bar Bolt — 3/8" N.C.**

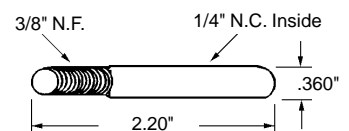
Part Number

**11-2110**

Material: Steel

Unit: Each Bulk: 5 Pcs.

Used By: Several Manufacturers



**Push/Pull Through Bolt — 3/8" N.F. x 1/4" N.C.**

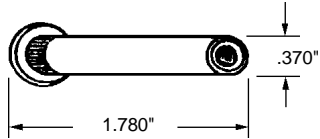
Part Number

**11-2111**

Material: Steel

Unit: Each Bulk: 5 Pcs.

Used By: Several Manufacturers



**Door Closer Through Bolt — 1/4" N.C.**

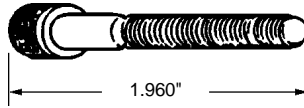
Part Number

**11-2112**

Material: Aluminum

Unit: Each Bulk: 10 Pcs.

Used By: Several Manufacturers



**Closer Arm Bolt — 5/16" N.C.**

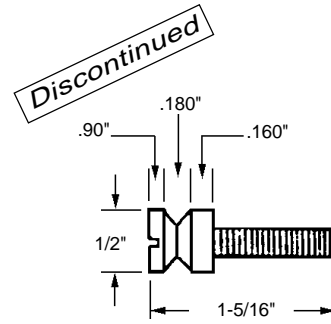
Part Number

**11-2113**

Material: Steel

Unit: Each Bulk: 10 Pcs.

Used By: Several Manufacturers



**Push Bar Bolt — 1/4" N.C.**

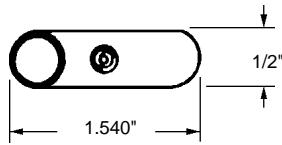
Part Number

**11-2114**

Material: Steel

Unit: N/A

Used By: Several Manufacturers



**Top Pivot Pin — Solid Bar**

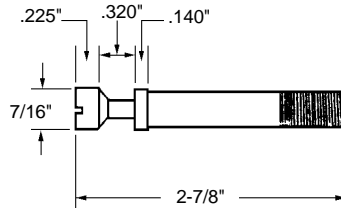
Part Number

**11-2115**

Material: Steel

Unit: Each Bulk: 10 Pcs.

Used By: Several Manufacturers



**Push/Pull Machine Bolt — 3/8" N.F.**

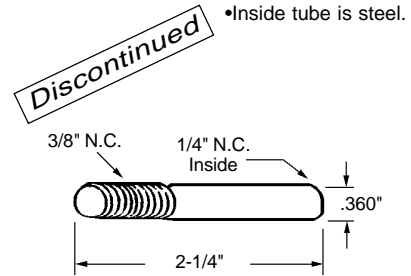
Part Number

**11-2117**

Material: Steel

Unit: Each Bulk: 10 Pcs.

Used By: Several Manufacturers



**Push/Pull Through Bolt — 3/8" N.C. x 1/4" N.C.**

Part Number

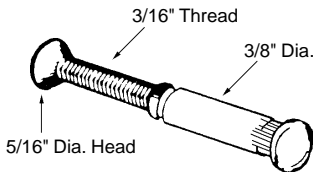
**11-2120**

Material: Steel

Unit: N/A

Used By: Several Manufacturers

•2-1/4" maximum length.



**Sex Bolt for Panic Hardware**

Part Number

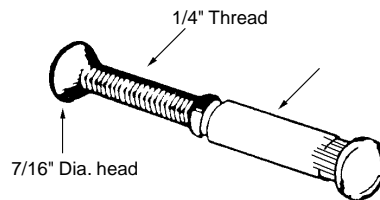
**11-2121**

Material: Die Cast

Unit: Each Bulk: 10 Pcs.

Used By: Several Manufacturers

•2-1/4" maximum length.



**Sex Bolt for Closer**

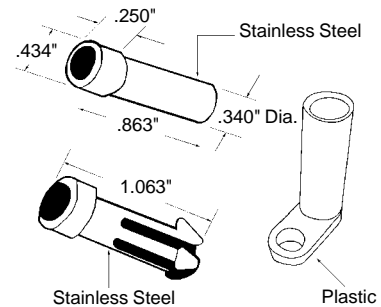
Part Number

**11-2122**

Material: Die Cast

Unit: Each Bulk: 10 Pcs.

Used By: Several Manufacturers



**#88 Axles for Panic Hardware**

Part Number

**11-5036**

Material: Stainless Steel/Plastic

Unit: Set Bulk: 5 Sets

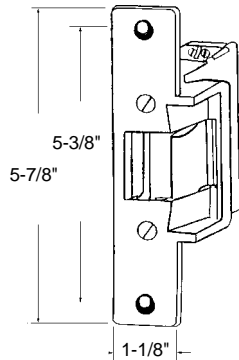
Used By: Von Duprin



# COMMERCIAL HARDWARE

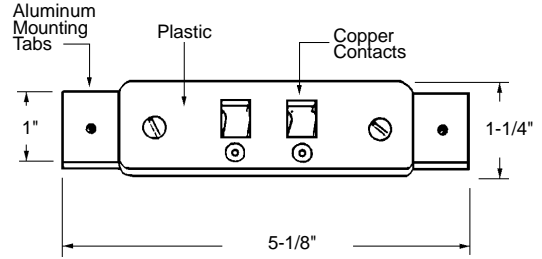
- Fits most standard E-lock mounts.
- Non-handed.
- c/w mounting screws.
- Tamper resistant.
- Superior electronics.
- Intermittent Duty.

MADE IN GERMANY



### Electric Strike

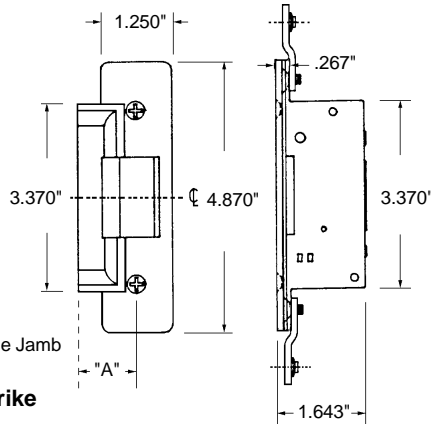
Part Number	Volts AC	Volts DC	Duty
<b>11-1611</b>	<b>8 - 24</b>	<b>8 - 16</b>	<b>Regular</b>
<b>11-1611A</b>	<b>16 - 24</b>	<b>16 - 24</b>	<b>Heavy</b>
Unit: Each	Bulk: 3 Pcs.		
Manufactured By: Peso			



### Electric Door Connectors

Part Number	Unit: Each	Bulk: 3 Pcs.	Used By: Several Manufacturers
<b>11-1521</b>			

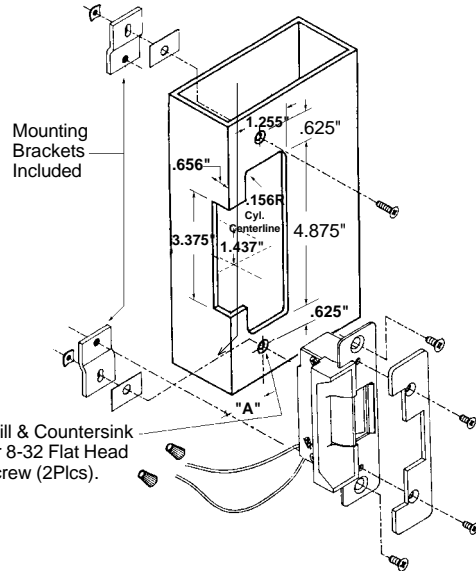
- Intermittent duty.



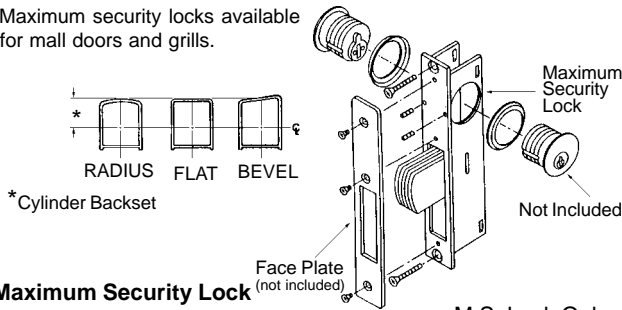
•Dimension "A" can be up to 1.06".

### Heavy Duty 24 Volt Electric Strike

Part Number	
<b>11-1552</b>	
Material: Steel	
Unit: Each	Bulk: 3 Pcs.
Used By: Adams-Rite	



- Maximum security locks available for mall doors and grills.



Part Number	Cylinder Backset	M.S. Lock Only
<b>11-2001A</b>	<b>7/8"</b>	
<b>11-2001B</b>	<b>31/32"</b>	
<b>11-2001C</b>	<b>1-1/8"</b>	
<b>11-2001D</b>	<b>1-1/2"</b>	

Material: Steel  
Unit: Each Bulk: 5 Pcs.  
Used By: Several Manufacturers

*\*How to measure cylinder backset see next page (centre).*

- Size: 1" x 6-7/8".

Bottom Up View

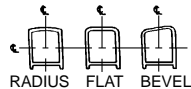
	Flat
	Radius
	Radius with weatherstrip
	Left Bevel
	Right Bevel

### M.S. Face Plates for M.S. Lock 11-2001 Series

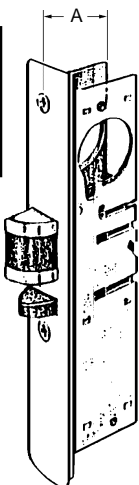
Part Number	Face Shape
<b>11-2003F</b>	<b>Flat</b>
<b>11-2004</b>	<b>Radius</b>
<b>11-2004W</b>	<b>Radius with Weatherstrip</b>
<b>11-2004W-B*</b>	<b>Radius with Weatherstrip</b>
<b>11-2003L</b>	<b>Left Bevel</b>
<b>11-2003R</b>	<b>Right Bevel</b>

Material: Aluminum  
Finish: Anodized Aluminum \*Anodized Bronze  
Unit: Each Bulk: 10 Pcs.  
Used By: Several Manufacturers

- Face plate not included.
- Round End face plate available on this page.



*\*How to measure cylinder backset see below.*



- Size: 1" x 6-7/8".

*Bottom Up View*



### Latch Lock

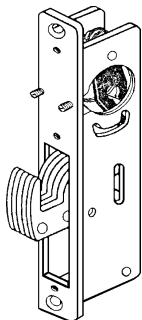
Part Number	"A" (Cylinder Backset)
<b>11-2002A</b>	<b>7/8"</b>
<b>11-2002B</b>	<b>31/32"</b>
<b>11-2002C</b>	<b>1-1/8"</b>
<b>11-2002D</b>	<b>1-1/2"</b>

Material: Steel/Plastic  
 Unit: Each      Bulk: 5 Pcs.  
 Used By: Several Manufacturers

### M.S. Face Plates for M.S. Lock 11-2002 Series

Part Number	Face Shape
<b>11-2007F</b>	<b>Flat</b>
<b>11-2008R</b>	<b>Radius</b>
<b>11-2008W</b>	<b>Radius with Weatherstrip</b>
<b>11-2007L</b>	<b>Left Bevel</b>
<b>11-2007R</b>	<b>Right Bevel</b>

Material: Aluminum  
 Finish: Anodized Aluminum  
 Unit: Each      Bulk: 10 Pcs.  
 Used By: Several Manufacturers

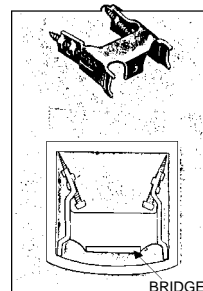
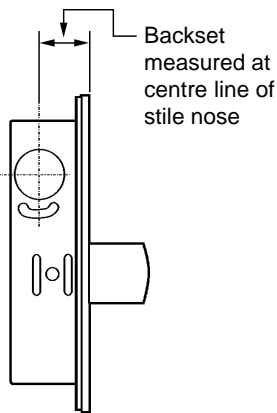


### Sliding Door Hook Lock

Part Number	Cylinder Backset
<b>11-1540</b>	<b>31/32"</b>

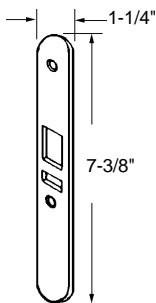
Material: Steel  
 Unit: Each      Bulk: 3 Pcs.  
 Used By: Several Manufacturers

### \*How to Measure Cylinder Backset?



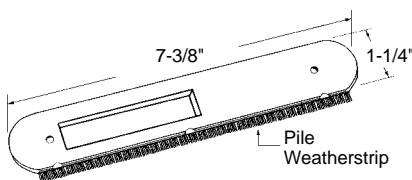
### Maximum Security Lock & Latch Mounting Bridge for Narrow Style Doors

Part Number	
<b>11-2021</b>	
Material: Steel	
Unit: Each	Bulk: 20 Pcs.
Used By: Several Manufacturers	



### Round End Face Plate for M.S. Lock 11-2002 Series

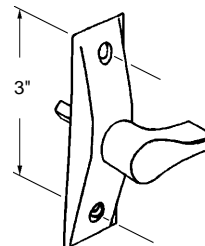
Part Number	
<b>11-2010</b>	
Material: Aluminum	
Finish: Anodized Aluminum	
Unit: Each	Bulk: 10 Pcs.
Used By: Several Manufacturers	



### Maximum Security Face Plate

Part Number	
<b>11-2005</b>	
Material: Aluminum	
Finish: Anodized Aluminum	
Unit: Each	Bulk: 10 Pcs.
Used By: Zimmcor	

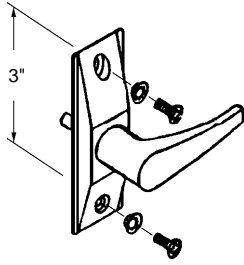
- Short handle type.
- Cam available separate, 11-2015C.



### Latch Lock Handle c/w Cam

Part Number	
<b>11-2016</b>	
Material: Aluminum/Steel	
Finish: Anodized Aluminum/Silver	
Unit: Each	Bulk: 5 Pcs.
Used By: Several Manufacturers	

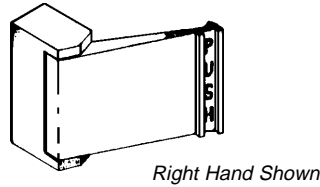
- Long handle type.
- Cam available separate, 11-2015C.



**Latch Lock Handle c/w Cam**

Part Number  
**11-2015**  
 Material: Aluminum/Steel  
 Finish: Anodized Aluminum/Silver  
 Unit: Each      Bulk: 10 Pcs.  
 Used By: Several Manufacturers

- Cam available separate, 11-2015C.



**Paddle Handle for Latch Lock c/w Cam**

Part Number	Hand
<b>11-2020L</b>	<b>Left</b>
<b>11-2020R</b>	<b>Right</b>

Material: Aluminum/Steel  
 Finish: Clear Anodized/Silver  
 Unit: Each      Bulk: 10 Pcs.  
 Used By: Several Manufacturers

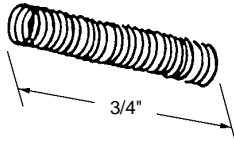
- Used with handles 11-2015 (this page), 11-2016 (page 6-17) and 11-2020L/R (this page).



**Cam Disk**

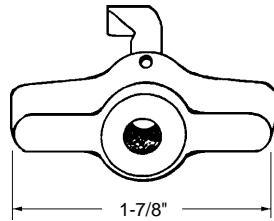
Part Number  
**11-2015C**  
 Material: Die Cast/Metal  
 Unit: Each      Bulk: 10 Pcs.  
 Used By: Several Manufacturers

- Replacement spring for paddle handle 11-2020 (on this page).



**Paddle Handle Spring**

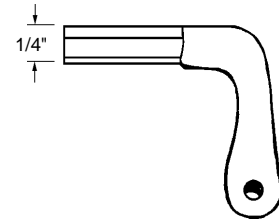
Part Number  
**11-2020S**  
 Material: Spring Steel  
 Wire Thickness: .020"  
 Overall Diameter: .155"  
 Unit: Each      Bulk: 20 Pcs.  
 Used By: Several Manufacturers



**Commercial Vent Lock**

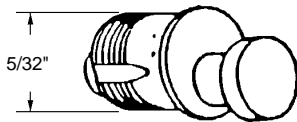
Part Number  
**11-1324**  
 Material: Bronze Cast  
 Finish: Silver  
 Unit: Each      Bulk: 5 Pcs.  
 Used By: Several Manufacturers

- Used with vent lock 11-1324.



**Commercial Vent Lock Key**

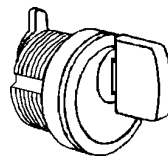
Part Number  
**11-1325**  
 Material: Bronze Cast  
 Finish: Silver  
 Unit: Each      Bulk: 5 Pcs.  
 Used By: Several Manufacturers



**Thumb Turn Cylinder**

Part Number	Finish
<b>11-2012B</b>	<b>Bronze</b>

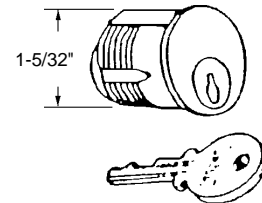
Material: Brass  
 Unit: Each      Bulk: 10 Pcs.  
 Used By: Viro



**Thumb Turn Cylinder**

Part Number	Finish
<b>11-2012C</b>	<b>Chrome</b>
<b>11-2012D</b>	<b>Duronodic</b>

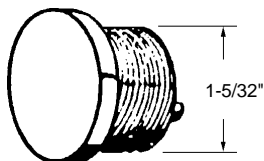
Material: Die Cast/Aluminum  
 Unit: Each      Bulk: 10 Pcs.  
 Used By: Several Manufacturers



**Standard Commercial Door Cylinder c/w 1 Key**

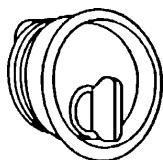
Part Number	Finish
<b>11-2011</b>	<b>Satin Aluminum</b>

Material: Brass  
 Unit: Each      Bulk: 10 Pcs.  
 Used By: Several Manufacturers



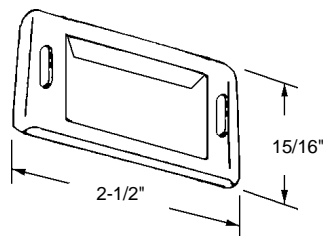
### Blank Cylinder

Part Number      Finish  
**11-2013B**      **Brown**  
**11-2013C**      **Chrome**  
 Material: Brass/Aluminum  
 Unit: Each      Bulk: 10 Pcs.  
 Used By: Several Manufacturers



### Flush Thumb Turn To Operate Locks or Latches

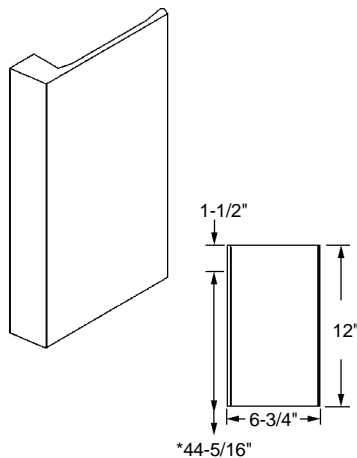
Part Number      Finish  
**11-2019**      **Satin Aluminum**  
 Material: Brass/Aluminum  
 Unit: Each      Bulk: 10 Pcs.  
 Used By: Several Manufacturers



### Strike

Part Number  
**11-1551**  
 Material: Die Cast  
 Finish: Natural  
 Unit: Each      Bulk: 15 Pcs.  
 Used By: Several Manufacturers

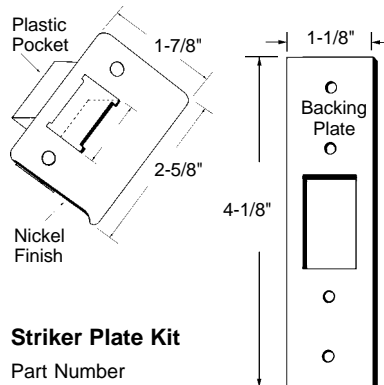
- Hole mounts 9"  $\phi$  to  $\phi$ .
- Direct attachment to the door is with concealed fasteners. The U pull handle projects 1-11/16" from the face of the door.
- The push/pull is mounted back to back, on double acting entrances as both push and pull. It may be combined with other push bars for use as a pull on single acting entrances.



### Push/Pull Handle

Part Number      Finish  
**11-1793B**      **Bronze**  
**11-1793LB**      **Light Bronze**  
 Material: Extruded Aluminum  
 Unit: Pair      Bulk: 5 Pair  
 Used By: Kawneer

\*Typical dimension from bottom of door to centre of upper fastener hole.



### Striker Plate Kit

Part Number  
**11-1553**  
 Material: Extruded Aluminum  
 Finish: Nickel  
 Unit: Each      Bulk: 5 Pcs.  
 Used By: Several Manufacturers

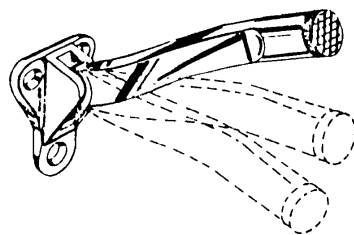
- Die cast mounting brackets.
- Grey vinyl cover prevents scratching.
- Two rugged compression springs.
- Approximately 30" in length.
- Heavy duty.



### Commercial Door Chain

Part Number  
**11-1612A**  
 Material: Die Cast/Steel  
 Unit: Each      Bulk: 10 Pcs.  
 Used By: Several Manufacturers

- Extra bumper.
- Heavy duty.
- c/w screws.
- 3-1/2" drop.



### Drop Down Door Holder

Part Number      Finish  
**11-1811**      **Polished Chrome**  
**11-1811-BR**      **Brass**  
 Material: Die Cast  
 Unit: Each      Bulk: 10 Pcs.  
 Used By: Several Manufacturers

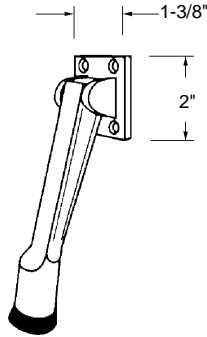
- Arm: 3"
- c/w screws.
- Flips up when not in use.



### Drop Down Door Holder

Part Number      Finish  
**11-1816**      **Chrome Plated**  
 Material: Wrought Steel  
 Unit: Each      Bulk: 15 Pcs.  
 Used By: Several Manufacturers

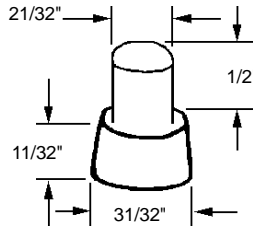
- Heavy duty.
- 5" drop.



**Door Stop**

Part Number      Finish  
**11-1811B**      **Silver**  
 Material: Die Cast  
 Unit: Each      Bulk: 10 Pcs.  
 Used By: Several Manufacturers

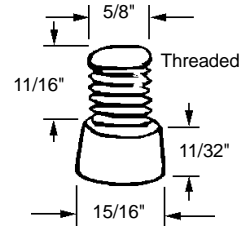
- Hole for recessed screw on bottom of rubber.



**Drop Down Door Stop Replacement Rubber**

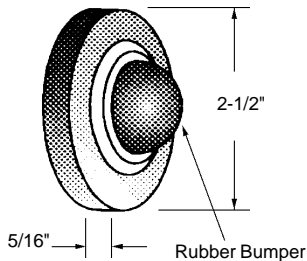
Part Number  
**11-1811C**  
 Material: Rubber  
 Colour: Grey  
 Unit: Each      Bulk: 25 Pcs.  
 Used By: Several Manufacturers

- Threaded.



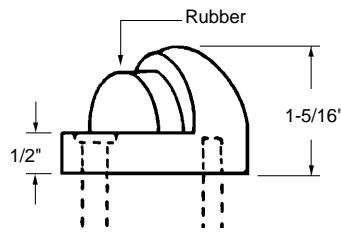
**Drop Down Door Stop Replacement Rubber**

Part Number  
**11-1811D**  
 Material: Rubber  
 Colour: Black  
 Unit: Each      Bulk: 25 Pcs.  
 Used By: Several Manufacturers



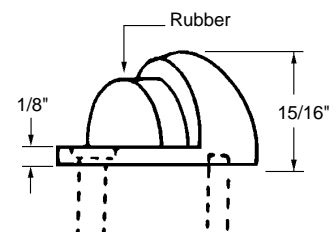
**Door Stop**

Part Number      Finish  
**11-1787**      **Satin Chrome**  
**11-1787-B**      **Brass**  
 Material: Die Cast/Steel  
 Unit: Each      Bulk: 10 Pcs.  
 Used By: Several Manufacturers



**Dome Door Stop**

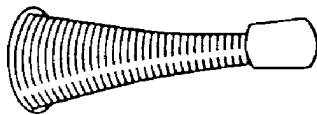
Part Number      Finish  
**11-1812L**      **Chrome**  
**11-1812L-B**      **Brass**  
 Material: Die Cast  
 Unit: Each      Bulk: 10 Pcs.  
 Used By: Several Manufacturers



**Dome Door Stop**

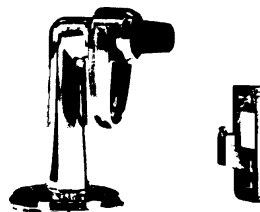
Part Number      Finish  
**11-1812S**      **Chrome**  
 Material: Die Cast  
 Unit: Each      Bulk: 10 Pcs.  
 Used By: Several Manufacturers

- Surface mounting.
- 2" projection.
- Non-handed.
- Height: 3-1/4".
- Diameter base: 2-3/4".



**Door Stop**

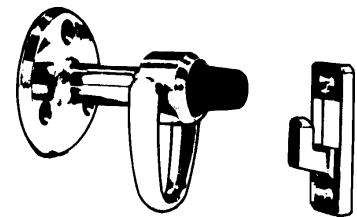
Part Number      Finish  
**11-1815A**      **Bronze**  
**11-1815B**      **Gold**  
**11-1815C**      **Silver**  
 Material: Steel  
 Unit: Each      Bulk: 25 Pcs.  
 Used By: Several Manufacturers



**Floor Type Door Stop**

Part Number      Finish  
**11-1812**      **Chrome** (Discontinued)  
**11-1812-BR**      **Brass**  
 Material: Die Cast  
 Unit: Each      Bulk: 10 Pcs.  
 Used By: Several Manufacturers

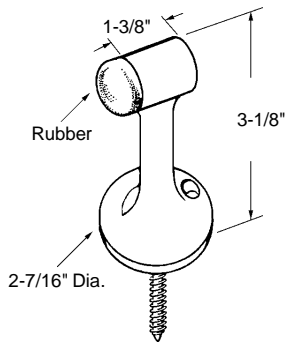
- Surface mounting.
- 3" projection.
- Non-handed.
- Diameter base: 2-1/4".



**Wall Type Door Stop**

Part Number      Finish  
**11-1817**      **Chrome** (Discontinued)  
**11-1817-BZ**      **Bronze**  
 Material: Die Cast  
 Unit: Each      Bulk: 10 Pcs.  
 Used By: Several Manufacturers

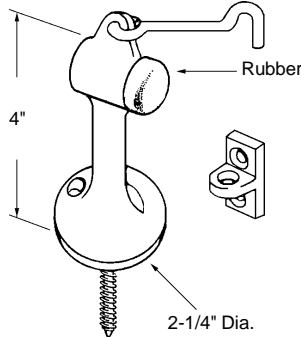
•c/w installation screws.



**Floor Mounted Door Stop**

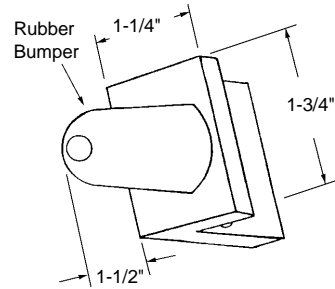
Part Number      Finish  
**11-1791**          **Bright Chrome**  
 Material: Brass  
 Unit: Each          Bulk: 10 Pcs.  
 Used By: Several Manufacturers

•c/w installation screws and hook.



**Floor Mounted Door Stop**

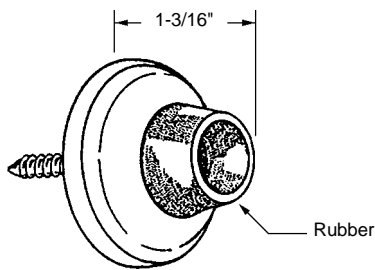
Part Number      Finish  
**11-1792**          **Bright Chrome**  
 Material: Brass  
 Unit: Each          Bulk: 5 Pcs.  
 Used By: Several Manufacturers



**Mall Door Bumper**

Part Number      Finish  
**11-1534A**  
 Material: Aluminum  
 Unit: Each          Bulk: 5 Pcs.  
 Used By: Several Manufacturers

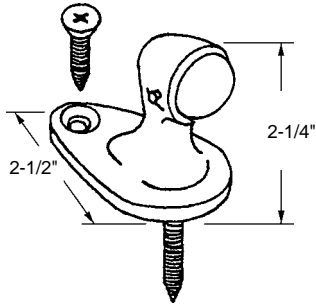
•c/w installation screws.



**Wall Type Door Stop**

Part Number      Finish  
**11-1790**          **Bright Chrome**  
 Material: Steel  
 Unit: Each          Bulk: 20 Pcs.  
 Used By: Several Manufacturers

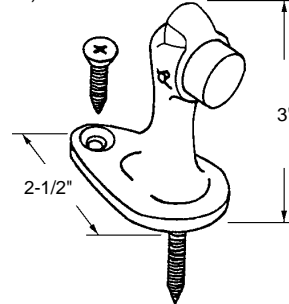
•c/w installation screws.



**Floor Mounted Door Stop**

Part Number      Finish  
**11-1788**          **Bright Chrome**  
 Material: Brass  
 Unit: Each          Bulk: 5 Pcs.  
 Used By: Several Manufacturers

•c/w installation screws and door hook (not shown).



**Floor Mounted Door Stop**

Part Number      Finish  
**11-1789**          **Bright Chrome**  
 Material: Brass  
 Unit: Each          Bulk: 5 Pcs.  
 Used By: Several Manufacturers

•c/w installation screws and door hook.



**Floor Mounted Door Stop**

Part Number      Finish  
**11-1704**          **Bright Chrome**  
 Material: Brass  
 Unit: Each          Bulk: 5 Pcs.  
 Used By: Several Manufacturers

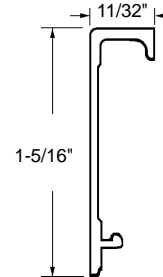
•c/w installation screws and door hook.



**Door Mounted Door Stop**

Part Number      Finish  
**11-1705**          **Bright Chrome**  
 Material: Brass  
 Unit: Each          Bulk: 5 Pcs.  
 Used By: Several Manufacturers

•For complete hinge see page 11-12.



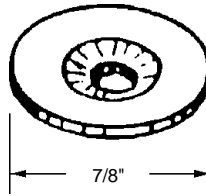
**Replacement Snap Cover for Full Surface Mount Hinge**

Part Number      Finish  
**11-FS-CAP-AL**      **Aluminum**  
**11-FS-CAP-DU**      **Duronodic**  
 Material: Extruded Aluminum  
 Unit: Each          Bulk: 10 Pcs.  
 Used By: Several Manufacturers



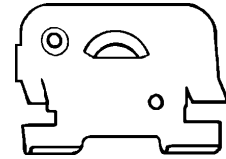
**Door Stop Clip**

Part Number  
**11-2152**  
 Material: Spring Steel  
 Unit: Each      Bulk: 50 Pcs.  
 Used By: Commercial Aluminum



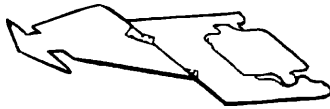
**Door Stop Clip**

Part Number  
**11-1606**  
 Material: Aluminum  
 Unit: Each      Bulk: 50 Pcs.  
 Used By: Kawneer



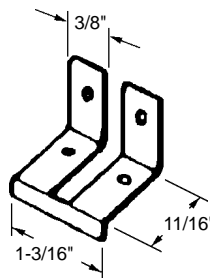
**Core Clip**

Part Number  
**11-1758**  
 Material: Steel  
 Unit: Each      Bulk: 100 Pcs.  
 Used By: Kawneer



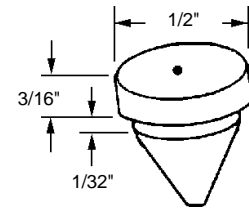
**Core Tool**

Part Number  
**11-1760**  
 Material: Steel  
 Unit: Each      Bulk: 5 Pcs.  
 Used By: Kawneer



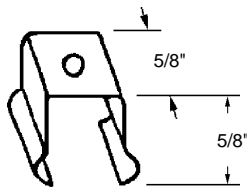
**Core Mullion Clip**

Part Number  
**11-1759**  
 Material: Steel  
 Unit: Each      Bulk: 25 Pcs.  
 Used By: Kawneer



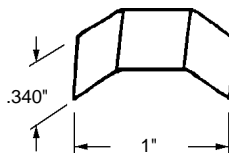
**Door Mutes**

Part Number  
**11-1522**  
 Material: Rubber  
 Colour: Grey  
 Unit: Each      Bulk: 100 Pcs.  
 Used By: Several Manufacturers



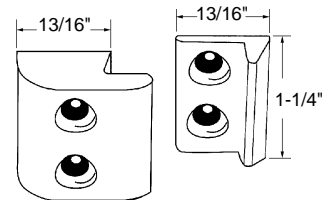
**Concealed Fastener**

Part Number  
**11-2118**  
 Material: Spring Steel  
 Unit: Each      Bulk: 20 Pcs.  
 Used By: Several Manufacturers



**Glazing Spacer**

Part Number  
**11-2119**  
 Material: Spring Steel  
 Unit: Each      Bulk: 20 Pcs.  
 Used By: Several Manufacturers



**Panic Hardware Stabilizer Strike**

Part Number      Finish  
**11-1620**  
 Material: Die Cast  
 Unit: Each      Bulk: 15 Pcs.  
 Used By: Jackson

•Drill 1/4" diameter hole.

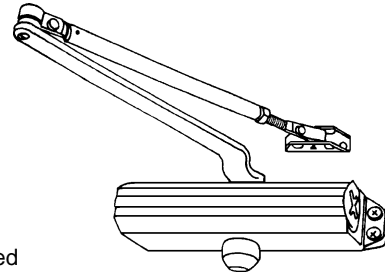
•c/w 3 shims and screws.



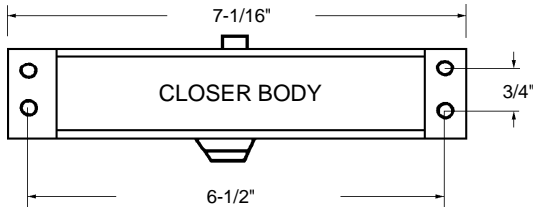
- Features:
- Dependable Trouble-Free Operation
  - Streamline Design for Narrow Stiles
  - Simple Installation
  - Non-Handed for Right or Left Hand Doors
  - Replaces Most Popular Brands
  - Full Rack & Pinion Design; Cast Aluminum Case (UL and ULC listed)
  - Full Five Year Factory Warranty

## COMMERCIAL DOOR CLOSERS

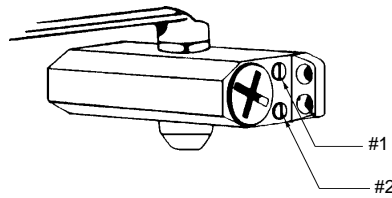
Light to Moderate Interior Application



No. 3 Body



Separate Latch & Speed Adjustment Screws



### Technical Details

- Interior or in-swinging exterior doors.
- One compact body size with 2-1/2 inch projection.
- Opening range of 115° to 180° depending on applications, trim conditions, and other installation particulars.
- Two separate, temperature-compensating, non-critical adjustment valves to control sweep and latch speeds under extreme temperature conditions.
- Cast aluminum body and corrosion-resistant, zinc-plated steel arm assembly.

- Hardened rack and pinion mechanism combined with a high-compression steel spring to give smooth, trouble-free operation.
- Standard arm and template for regular and top jamb installation.
- Optional parallel arm bracket (specify).
- Fasteners for wood, aluminum, or hollow metal door applications.
- Sex nuts with machine screws available. Specify SN7 for 1-3/4" doors or SN8 for 1-3/8" doors.

Cross Reference Chart TS77 Series

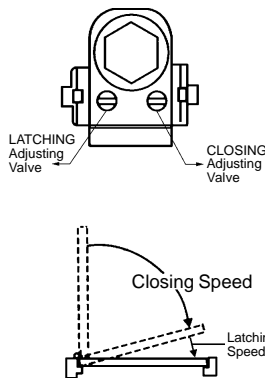
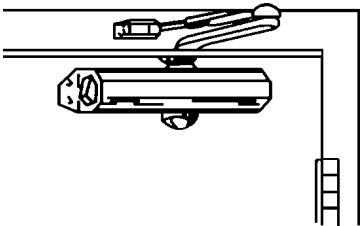
FUNCTION	DORMA	NORTON	YALE	INTERNATIONAL	TAYMOR	SARGENT
STANDARD	TS77	9200	2200	500	500	1100 SD
TOP JAMB	TS77	9200	2200	500	500	1100 SD
PARALLEL	TS77 PA	9200	2200	500-P	500P	100 SD

### Commercial Door Closer

Part Number      Finish  
**11-TS77A**          **Aluminum**  
**11-TS77G**          **Gold**  
 Unit: Each          Bulk: 20 Pcs.  
 Manufactured By: Dorma

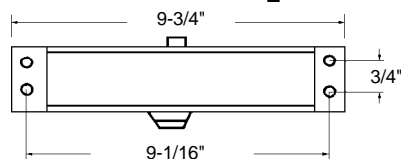
Based on information obtained from trade sources, it is our judgement these products are most similar. Exact equivalency is not guaranteed.

- Economy model.
- Two separate valves with adjustable closing and latching speed.
- Universal application non-handed for standard or top-jamb installation.
- 5 year factory warranty.

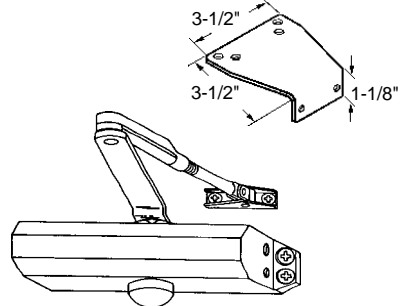


### Commercial Door Closer

Part Number      Finish  
**11-504-AL**          **Aluminum**  
**11-504-DU**          **Duronodic**  
 Unit: Each          Bulk: 10 Pcs.  
 Manufactured For: All Glass Parts Inc.



- Same dimensions as 11-644 closer (page 11-24).



### Commercial Door Closer c/w Parallel Arm Bracket

Part Number      Finish  
**11-645BC-PA-AL**      **Aluminum**  
 Unit: Each          Bulk: 10 Pcs.  
 Manufactured By: Dorma

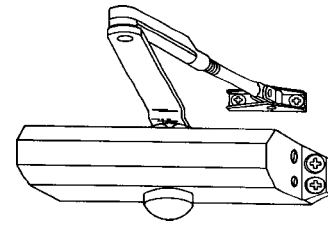




**Features:**

- The Standard Mount for Most Applications
- No Hole Drilling, Standard 9-1/16" Mounting Holes Replaces 90% Surface Mount Closers
- Dependable Trouble-Free Operation
- Streamline for Narrow Stiles
- Simple Installation
- Non-Handed for Right or Left Hand Doors
- Replaces Most Popular Brands
- All Closers Have Latch, Sweep and Back Check Adjustments
- Standard Finishes are Aluminum and Duronodic

**COMMERCIAL DOOR CLOSERS**  
Apartments – Schools – Hospitals – Offices



SUITABLE FOR UP TO 4' EXTERIOR DOOR

**•Full 25 Year Factory Warranty**

**Technical Details 644**

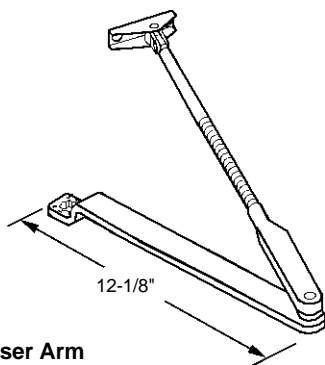
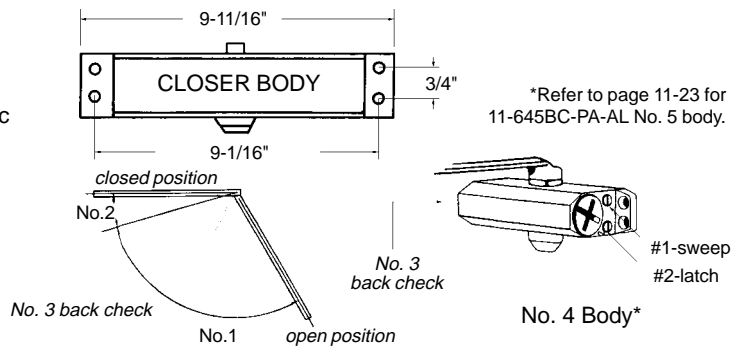
- One compact body size with 2-7/8" projection.
- Highly efficient hardened steel rack and pinion mechanism together with a virtually unbreakable compression spring, all totally immersed in hydraulic fluid to give smooth trouble free operation.
- Three non-critical valves, one to control the sweep speed approximately 180-10°, one to control the latch speed approximately 10-0°, and, one back check valve to prevent uncontrolled opening of the door from approximately 60°.
- The three adjusting valves (sweep, latch and back check) have built in thermostatic properties which together with the high quality hydraulic fluid give constant closing speeds even under extreme temperature changes.
- A quality, precision machined aluminum body and zinc plated arm assembly assure resistance to corrosion.

All parts are finished with a two coat paint system to give the closer a superb appearance.

- Installations for door opening up to 180°, except for top jamb application where reveal depths exceed 4". The closer is fully reversible left or right hand without adjustment.
- A large variety of accessories guarantee trouble free installation even for the most difficult applications.
- Twenty-five year warranty.
- U.L. and U.L.C. listed.
- Non-hold open closers are fire rated.

**Commercial Door Closer**

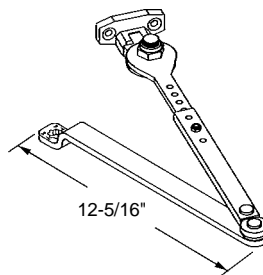
Part Number	Finish
<b>11-644BC-AL</b>	<b>Aluminum</b>
<b>11-644BC-D</b>	<b>Duronodic</b>
Unit: Each	Bulk: 10 Pcs.
Manufactured By: Dorma	



**Closer Arm**

Part Number	Finish
<b>11-644ARM-AL</b>	<b>Aluminum</b>
<b>11-644ARM-DU</b>	<b>Duronodic</b>
Material: Steel	
Unit: Each	Bulk: 10 Pcs.
Manufactured By: Dorma	

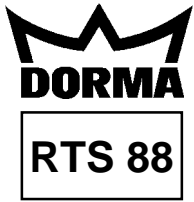
•For 11-644BC closers.



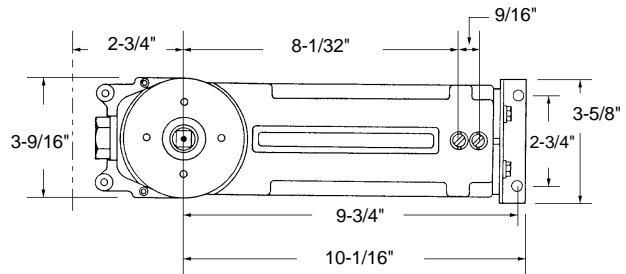
**Friction Hold Open Arm**

Part Number	Finish
<b>11-C691-AL</b>	<b>Aluminum</b>
<b>11-C691-DU</b>	<b>Duronodic</b>
Material: Steel	
Unit: Each	Bulk: 5 Pcs.
Manufactured By: Dorma	

**CLOSER  
ACCESSORIES  
ON FOLLOWING  
PAGES.**



**COMMERCIAL DOOR CLOSERS**  
Overhead Concealed Door Closers



**Invisible Door Control...Dependable and Easy to Install**

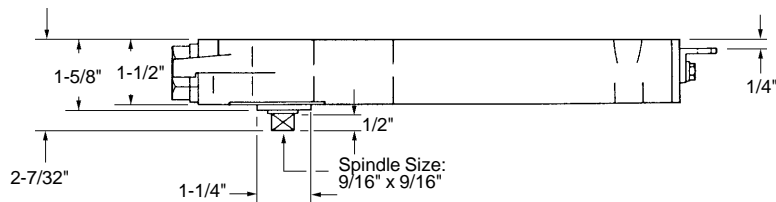
- The RTS 88 is designed to give lasting, dependable service where surface-applied units and other types of closers are not suitable, or would interfere with the architectural design. It can be easily installed in wood, aluminum or hollow metal doors and frames, for single- and double-acting doors.
- The RTS 88 Series overhead concealed door closer has a compact body size which fits into a 1-3/4" x 4" header for aluminum frames and is also easily adaptable to wood and hollow metal frame configurations.
- Openings fitted with the RTS 88 are capable of 90° or 105° maximum door swing, trim conditions permitting. Sweep and latch closing speeds are controlled by two non-critical temperature compensating adjustment valves to insure constant closing speeds even under the most extreme temperature conditions. A built-in pressure relief valve protects the closer from abuse due to forced closing. A positive stop at 90° or 105°, depending on model selected, combined with a mechanical backcheck, hinder the forceful or abusive opening of the door and help protect door, frame, and adjoining structure.

**•Full 10 Year Factory Warranty**

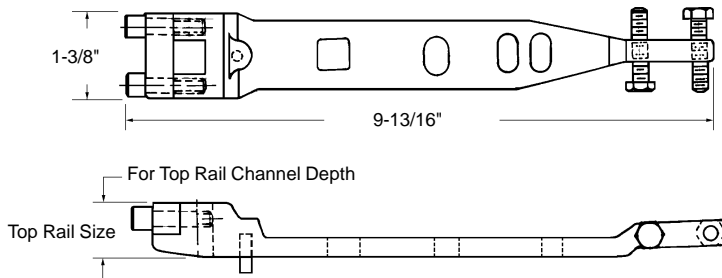
- The RTS 88 is capable of accommodating doors weighing up to a maximum of 250 pounds. The closer can handle exterior doors up to a maximum 3'6" width and interior doors up to a maximum 4' width.
- The RTS 88 is suited for easy retrofit of Jackson, Rixson and similar style closers.

**Commercial Door Closer**

Part Number	Opening/Operation
<b>11-RTS 88 A</b>	<b>105° Hold Open</b>
<b>11-RTS 88 B</b>	<b>90° Hold Open</b>
<b>11-RTS 88 C</b>	<b>105° Non-Hold Open</b>
<b>11-RTS 88 D</b>	<b>90° Non-Hold Open</b>
Unit: Each	Bulk: 5 Pcs.
Manufactured By: Dorma	



•End load closer arm for 11-RTS 88 closer.



**Closer Arm for Centre Hung Door End Mount**

Part Number	Top Rail Size
<b>11-1570A</b>	<b>1"</b>
<b>11-1570B</b>	<b>7/8"</b>
<b>11-1570C</b>	<b>3/4"</b>
<b>11-1570D</b>	<b>5/8"</b>
Unit: Each	Bulk: 5 Pcs.
Manufactured By: Dorma	

**CLOSER  
ACCESSORIES  
ON FOLLOWING  
PAGES.**



**Barrier Free Solution**



**The Problem:**

How to provide barrier-free accessibility, but reliably close and latch the door.

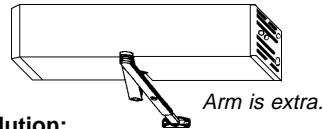
- Winds/drafts
- Heating/air conditioning
- Latch bolts/flush bolts
- Exit devices
- Weatherstripping

**These conditions can make doors difficult to close and latch. Closers with reduced spring power can meet barrier-free codes but often lack the power to overcome "real world" conditions, particularly on labelled fire doors.**

**This problem presents an avenue for commercial door service companies to provide important additional services to their customers, adding value and income.**

**But, what product fills this void?**

*ED800 accessories on page 11-30.*



**The Solution:  
DORMA'S ED800 Low Energy Operator**

**Features:**

- Complies with ADA and ANSI A117.1.
- Field adjustable from 5 lbs. to 11 lbs. closing force.
- Low energy or power assist opening cycle (select at installation).
- Low energy power-opens the door but can be stopped with a force of 15 lbs. or less.
- Power assist reduces the force required to push the door open. Adjustable from approximately 1.5 lbs. to 5.0 lbs.
- Controls doors from 36"/100 lbs. to 48"/200 lbs.
- Quick uncomplicated one person installation.
- Non-handed.
- Suitable for new or retrofit installations.
- Interfaces with electric strikes, exit devices with electric latch retractions and other access control system components.
- Ideal for entrance doors, bathroom doors, labelled fire doors, nursing homes, hospitals, schools, colleges, apartments, malls, public buildings and many other applications.

*Other finishes available on request.*

**Commercial Door Closer**

Part Number

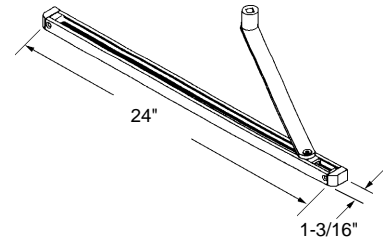
**11-ED800**

Finish: Clear Anodized

Unit: Each      Bulk: N/A

Manufactured By: Dorma

•For use with 11-ED800 closer.



**Pull Type Slide Track Arm**

Part Number

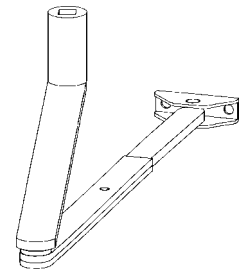
**11-ED-T**

Unit: Each

Bulk: N/A

Manufactured By: Dorma

•For use with 11-ED800 closer.



**Push Type Regular Arm**

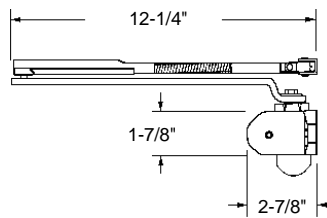
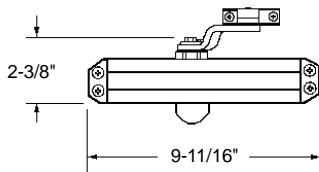
Part Number

**11-C886**

Unit: Each

Bulk: N/A

Manufactured By: Dorma



**Commercial Door Closer — Delay Closing Action for Barrier Free Doors**

Part Number

**11-641**

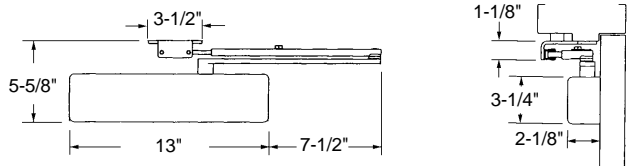
Finish: Aluminum

Unit: Each      Bulk: 10

Manufactured By: Dorma



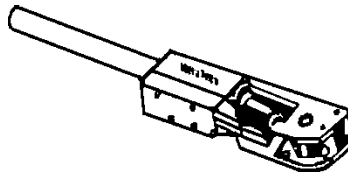
•Replaces LCN4040 closer.



### Commercial Door Closer

Part Number	Finish
<b>11-8901PA-AL</b>	<b>Aluminum</b>
<b>11-8901PA-DU</b>	<b>Duronodic</b>
Unit: Each	Bulk: 10 Pcs.
Manufactured By: Dorma	

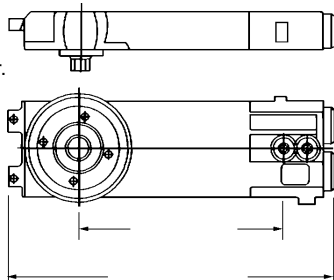
•Replaces old Kawneer Husky closer.



### Concealed Overhead Closer

Part Number	Opening
<b>11-1820</b>	<b>90° Hold Open</b>
Unit: Each	Bulk: 5 Pcs.
Manufactured For: All Glass Parts Inc.	

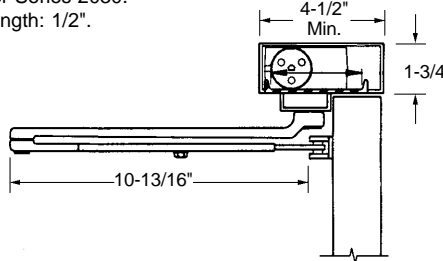
- Closer body only.
- Non-handed.
- Fits into a standard 1-3/4" x 4" aluminum header.
- Adjustable closing and latching speeds.



### Concealed Commercial Door Closer

Part Number	Opening/Operation
<b>11-20-330A</b>	<b>90° Hold Open</b>
<b>11-20-330B</b>	<b>90° Non-Hold Open</b>
<b>11-20-330C</b>	<b>105° Hold Open</b>
<b>11-20-330D</b>	<b>105° Non-Hold Open</b>
Unit: Each	Bulk: 5 Pcs.
Manufactured By: Jackson	

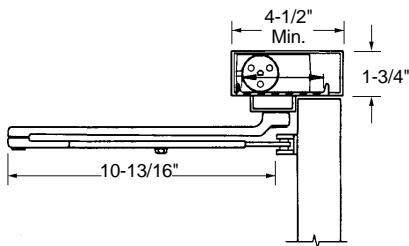
- LCN Closer Series 2030.
- Spindle Length: 1/2".



### Commercial Overhead Concealed Door Closer with Standard Arm

Part Number	Hand
<b>11-2035L</b>	<b>Left</b>
<b>11-2035R</b>	<b>Right</b>
Finish: Aluminum	
Unit: Each	Bulk: 5 Pcs.
Manufactured By: LCN	

- LCN Closer Series 5030.
- Spindle Length: 1-1/4".



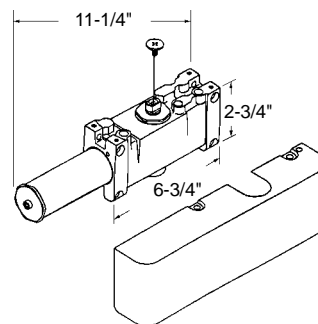
### Commercial Overhead Concealed Door Closer with Standard Arm

Part Number	Hand
<b>11-5035L</b>	<b>Left</b>
<b>11-5035R</b>	<b>Right</b>
Finish: Aluminum	
Unit: Each	Bulk: 5 Pcs.
Manufactured By: LCN	

- Replaces LCN Model 4041.
- Slim-line design with plastic cover.
- Non-handed rack & pinion design.
- High quality cast aluminum alloy body.
- Independent control adjustments for sweep and latch speed as well as backcheck positioning.
- Non-critical thermostatic valves provide year-round adjustment-free operation.
- Hydraulic fluid resists gumming and freezing even under extreme temperatures.
- Parallel arm bracket included.
- 10 Year Warranty.
- U.L. listed.

### Commercial Door Closer

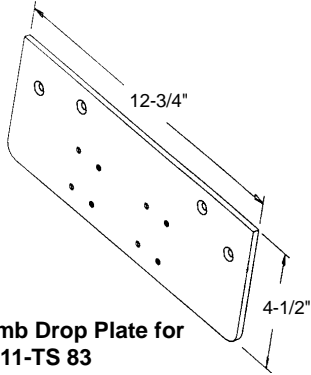
Part Number	Finish
<b>11-4041-AL</b>	<b>Aluminum</b>
<b>11-4041-DU</b>	<b>Duronodic</b>
Unit: Each	Bulk: 5 Pcs.
Manufactured For: All Glass Parts Inc.	



### Hold Open Arm for 11-4041 Closer

Part Number	Finish
<b>11-4041-HO-AL</b>	<b>Aluminum</b>
<b>11-4041-HO-DU</b>	<b>Duronodic</b>
Unit: Each	Bulk: 5 Pcs.
Manufactured For: All Glass Parts Inc.	

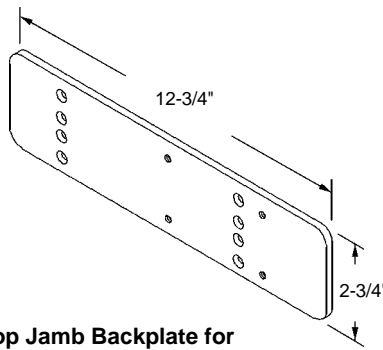
•Fits discontinued Dorma TS 83 closer.



**Top Jamb Drop Plate for Closer 11-TS 83**

Part Number	Finish
<b>11-TS 83 DP-AL</b>	<b>Aluminum</b>
<b>11-TS 83 DP-DU</b>	<b>Duronodic</b>
Unit: Each	Bulk: 5 Pcs.
Manufactured By: Dorma	

•Fits discontinued Dorma TS 83 closer.

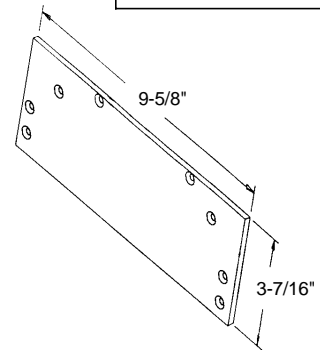


**Top Jamb Backplate for Closer 11-TS 83**

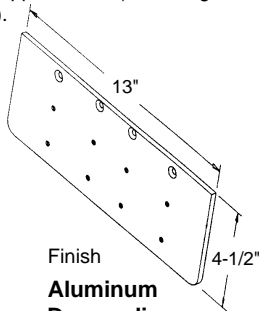
Part Number	Finish
<b>11-TS 83TJ-DU</b>	<b>Duronodic</b>
Unit: Each	Bulk: 5 Pcs.
Manufactured By: Dorma	

**Drop Plate for Dorma 644 Closer**

Part Number	Finish
<b>11-644DP-AL</b>	<b>Aluminum</b>
<b>11-644DP-DU</b>	<b>Duronodic</b>
Material: Metal	
Unit: Each	Bulk: 5 Pcs.
Manufactured By: Dorma	



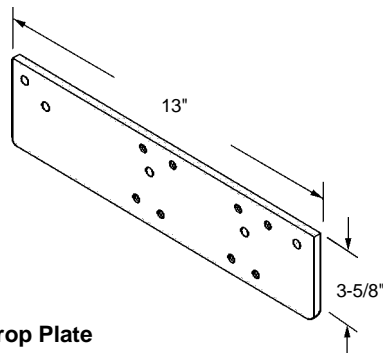
•For parallel arm installation of 11-8901PA closer when top door rail is less than 5-3/4" for non-hold open and plunger hold open. When top door rail is less than 6" for friction and fusible link applications (assuming 5/8" stop dimension).



**Drop Plate**

Part Number	Finish
<b>11-8960-AL</b>	<b>Aluminum</b>
<b>11-8960-DU</b>	<b>Duronodic</b>
Material: Metal	
Unit: Each	Bulk: 10 Pcs.
Manufactured By: Dorma	

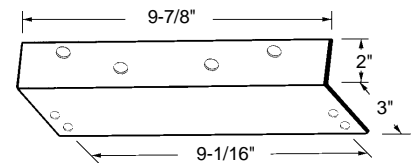
•Used with closer 11-4041 on page 11-27.



**Drop Plate**

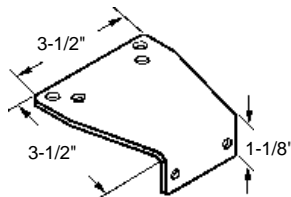
Part Number	Finish
<b>11-4041-DP-AL</b>	<b>Aluminum</b>
Material: Metal	
Unit: Each	Bulk: 10 Pcs.
Manufactured For: All Glass Parts Inc.	

•Fits all 9-1/16"  $\phi$  to  $\phi$  closer mounts.



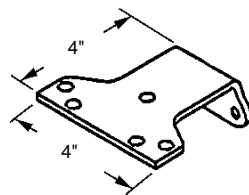
**Closer Angle Bracket**

Part Number	Finish
<b>11-644CA-AL</b>	<b>Aluminum</b>
<b>11-644CA-DU</b>	<b>Duronodic</b>
Material: Metal	
Unit: Each	Bulk: 5 Pcs.
Manufactured By: Dorma	



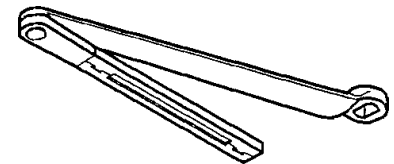
**Parallel Arm Bracket for Dorma 644 Closer**

Part Number	Finish
<b>11-644BT-AL</b>	<b>Aluminum</b>
<b>11-644BT-DU</b>	<b>Duronodic</b>
Material: Metal	
Unit: Each	Bulk: 5 Pcs.
Manufactured By: Dorma	



**Parallel Arm Bracket for 4040 Series LCN Closers**

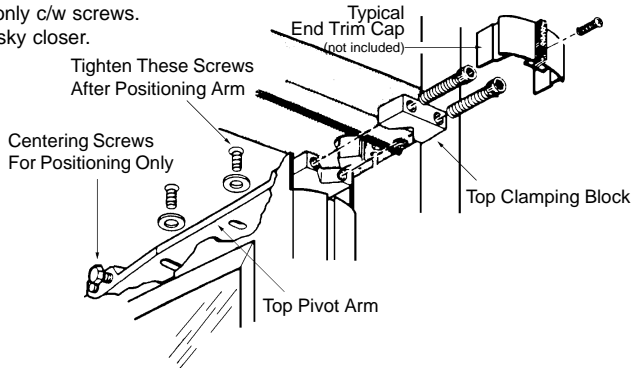
Part Number	
<b>11-1795</b>	
Material: Steel	
Unit: Each	Bulk: 5 Pcs.
Manufactured By: LCN	



**Regular Closer Arm**

Part Number	
<b>11-1794</b>	
Material: Steel Cast	
Unit: Each	Bulk: 5 Pcs.
Manufactured By: LCN	

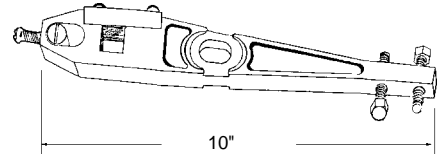
- Closer arm only c/w screws.
- Used on Husky closer.



**Closer Arm for Centre Hung Door End Mount**

Part Number  
**11-1519**  
 Material: Steel  
 Unit: Each      Bulk: 5 Pcs.  
 Manufactured By: Kawneer

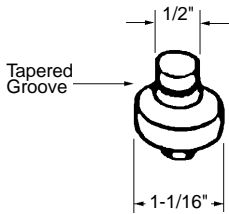
- Side mount type.
- Accommodates spindle size 9/16" x 9/16".



**Closer Arm for Centre Hung Door**

Part Number      Finish  
**11-1520**      **Aluminum**  
 Material: Die Cast  
 Unit: Each      Bulk: 5 Pcs.  
 Manufactured For: All Glass Parts Inc.

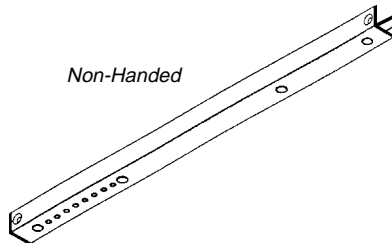
- Used with top door track 11-1784.



**Closer Arm Roller Bearing**

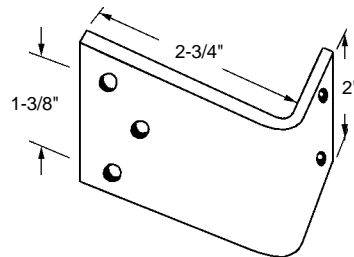
Part Number  
**11-1783**  
 Material: Steel  
 Unit: Each      Bulk: 5 Pcs.  
 Manufactured By: LCN

- Used with roller bearing 11-1783.
- Length: 22-1/2".



**Top Door Track for Closer Bearing**

Part Number  
**11-1784**  
 Material: Aluminum  
 Unit: Each      Bulk: 5 Pcs.  
 Manufactured By: LCN

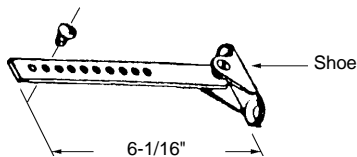


**Parallel Arm for Dorma Closer TS77A**

Part Number      Finish  
**11-TS77A-PA**      **Aluminum**  
 Material: Steel  
 Unit: Each      Bulk: 10 Pcs.  
 Manufactured By: Dorma

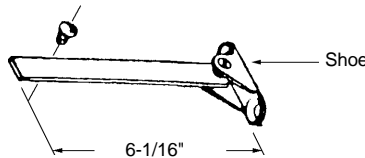
**Discontinued**

- Replacement: 11-1785A on this page.



**Rod & Shoe for Closer Arm**

Part Number  
**11-1785**  
 Unit: N/A  
 Manufactured By: LCN



**Rod & Shoe for Closer Arm**

Part Number  
**11-1785A**  
 Material: Steel  
 Unit: Each      Bulk: 5 Pcs.  
 Manufactured By: LCN

- 7/16" N.C.



**Pivot Cup for LCN Closer Shoe**

Part Number  
**11-1786**  
 Material: Brass  
 Unit: Each      Bulk: 20 Pcs.  
 Manufactured By: LCN

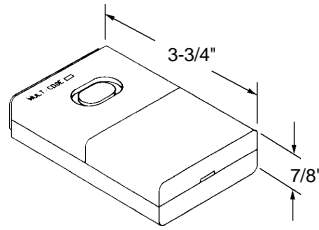
•For use with 11-ED800 closer (page 11-26).



**Frame Switch**

Part Number  
**11-800FS-1**  
 Unit: Each      Bulk: N/A  
 Manufactured By: Dorma

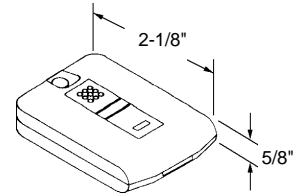
•For use with 11-ED800 closer (page 11-26).



**Hand Held Transmitter**

Part Number  
**11-800HH/RFT-1**  
 Unit: Each      Bulk: N/A  
 Manufactured By: Dorma

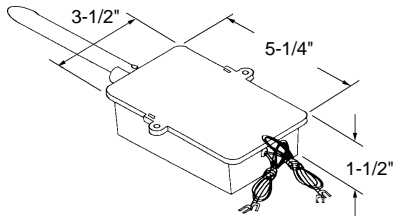
•For use with 11-ED800 closer (page 11-26).



**Key Chain Transmitter**

Part Number  
**11-800KC/RFT-1**  
 Unit: Each      Bulk: N/A  
 Manufactured By: Dorma

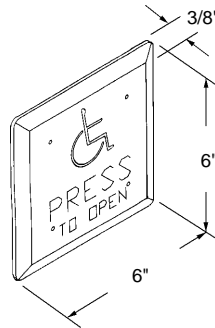
•For use with 11-ED800 closer (page 11-26).



**Radio Frequency Receiver**

Part Number  
**11-800RFR-12**  
 Unit: Each      Bulk: N/A  
 Manufactured By: Dorma

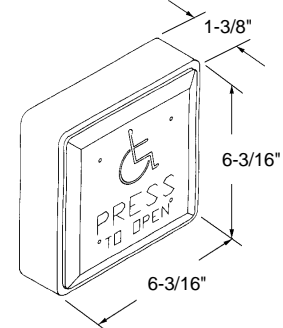
•For use with 11-ED800 closer (page 11-26).



**Hard-Wired Wall Switch**

Part Number  
**11-800WS-1**  
 Unit: Each      Bulk: N/A  
 Manufactured By: Dorma

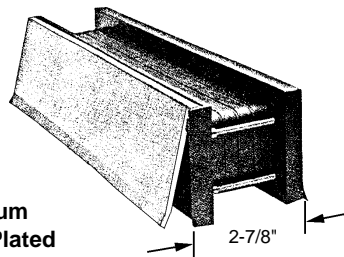
•For use with 11-ED800 closer (page 11-26).



**Wireless Wall Switch**

Part Number  
**11-800WS/RFT-1**  
 Unit: Each      Bulk: N/A  
 Manufactured By: Dorma

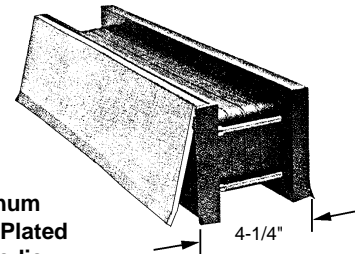
- Easy to install.
- Telescoping housing.
- Self-closing inside and outside anodized aluminum flaps.
- Choice of flap finishes.
- Soft rubber weather seal for outside trim.
- Insulation gaskets in all critical areas.
- Solid brass fasteners.
- Fully enclosed tough plastic housing (black).
- Face Size: 11-3/4" x 2-7/8".
- Cut-out: 11-1/8" x 2".
- Door thickness: 1-3/4".



**Mail Slot**

Part Number      Finish  
**11-1809AL**      **Aluminum**  
**11-1809BP**      **Brass Plated**  
**11-1809DU**      **Duronodic**  
 Material: Anodized Aluminum/Plastic  
 Unit: Each      Bulk: 5 Pcs.  
 Used By: Several Manufacturers

- Easy to install.
- Telescoping housing.
- Self-closing inside and outside anodized aluminum flaps.
- Choice of flap finishes.
- Soft rubber weather seal for outside trim.
- Insulation gaskets in all critical areas.
- Solid brass fasteners.
- Fully enclosed tough plastic housing (black).
- Face Size: 10-1/4" x 2-7/8".
- Cut-out: 8-3/4" x 2".
- Door thickness: 5/8" - 3".

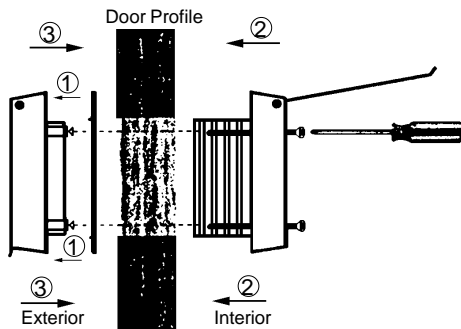


**Mail Slot**

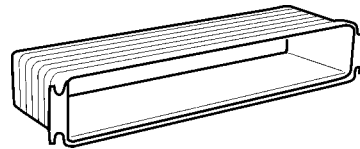
Part Number      Finish  
**11-1810AL**      **Aluminum**  
**11-1810BP**      **Brass Plated**  
**11-1810DU**      **Duronodic**  
 Material: Anodized Aluminum/Plastic  
 Unit: Each      Bulk: 5 Pcs.  
 Used By: Several Manufacturers

**INSTALLATION INSTRUCTIONS FOR 11-1809 AND 11-1810 MAIL SLOTS**

- Make cut-out using template on back of packaging.
- Place the rubber seal over the mold of the outside trim ①.
- Both rubber edges should fit snugly into the mold channels.
- Insert the interior trim first ②, then fit together with exterior trim ③, and fasten with screws provided.



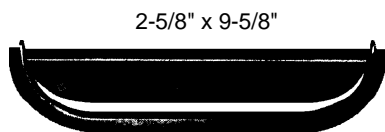
- For mail slots 11-1809AL/BP/ DU.
- For doors thicknesses of 1-3/4" to 4-1/4".
- Screws included.
- Carefully cut to size with a fine-point saw.



**Mail Slot Extension Sleeve**

Part Number  
**11-1809EXT**  
 Material: Plastic  
 Colour: Black  
 Unit: Each      Bulk: 5 Pcs.  
 Used By: Several Manufacturers

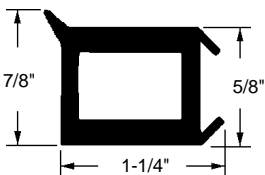
- Fits standard tempered door plate cut-outs.
- Excellent Quality.



**Mail Slot**

Part Number	Finish
<b>11-1814</b>	<b>Aluminum</b>
<b>11-1814B</b>	<b>Duronodic</b>
Material: Aluminum	
Unit: Each	Bulk: 10 Pcs.
Used By: Several Manufacturers	

- Fits Series 6400 curtain wall.
- Length: 1-3/8".



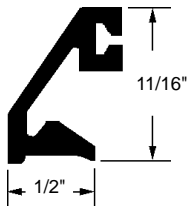
**Corner Plug**

Part Number  
**11-1703**  
 Material: Rubber  
 Unit: Each      Bulk: 50 Pcs.  
 Used By: Commercial Aluminum



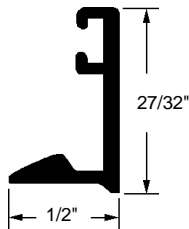
**Thresholds**

Part Number	Width
<b>11-2144</b>	<b>4"</b>
<b>11-2145</b>	<b>5"</b>
<b>11-2146</b>	<b>6"</b>
<b>11-2147</b>	<b>7"</b>
<b>11-2148</b>	<b>8"</b>
Material: Aluminum	
Stock Length: 12'	
Unit: Foot	Bulk: 36 Ft.
Used By: Several Manufacturers	



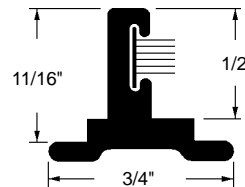
**Bevelled Door Stop**

Part Number	Finish
<b>11-2150B</b>	<b>Med. Bronze Anodized</b>
<b>11-2150C</b>	<b>Clear Anodized</b>
Material: Aluminum	
Stock Length: 19' 6"	
Unit: Foot	Bulk: 58 Ft.
Used By: Commercial Aluminum	



**Sealed Unit Door Stop**

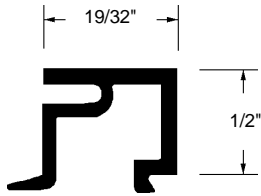
Part Number	Finish
<b>11-2151B</b>	<b>Med. Bronze Anodized</b>
<b>11-2151C</b>	<b>Clear Anodized</b>
Material: Aluminum	
Stock Length: 19' 6"	
Unit: Foot	Bulk: 58 Ft.
Used By: Commercial Aluminum	



**Weatherstrip Pocket Filler for 2" Door**

Part Number	Finish
<b>11-2133B</b>	<b>Med. Bronze Anodized</b>
<b>11-2133C</b>	<b>Clear Anodized</b>
Material: Aluminum	
Stock Length: 22'	
Unit: Foot	Bulk: 66 Ft.
Used By: Kawneer	





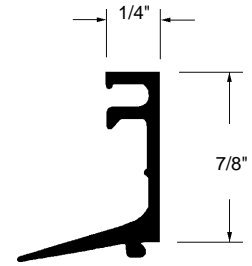
**Door Stop**

Part Number Finish  
**11-2127B Med. Bronze Anodized**  
**11-2127C Clear Anodized**  
 Material: Aluminum  
 Stock Length: 22'  
 Unit: Foot Bulk: 66 Ft.  
 Used By: Zimmcor



**Door Stop**

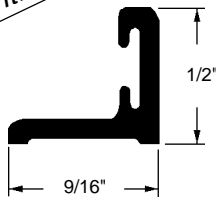
Part Number Finish  
**11-2128B Med. Bronze Anodized**  
**11-2128C Clear Anodized**  
 Material: Aluminum  
 Stock Length: 22'  
 Unit: Foot Bulk: 66 Ft.  
 Used By: Zimmcor



**Door Stop**

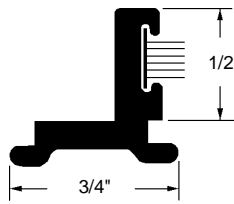
Part Number Finish  
**11-2129B Med. Bronze Anodized**  
**11-2129C Clear Anodized**  
 Material: Aluminum  
 Stock Length: 22'  
 Unit: Foot Bulk: 66 Ft.  
 Used By: Zimmcor

*Discontinued*



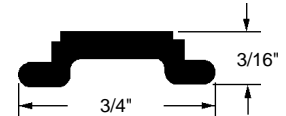
**Door Weatherstrip Holder**

Part Number Finish  
**11-2131B Med. Bronze Anodized**  
**11-2131C Clear Anodized**  
 Material: Aluminum  
 Stock Length: 22'  
 Unit: N/A  
 Used By: Zimmcor



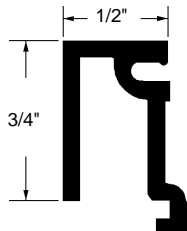
**Weatherstrip Pocket Filler for 1-3/4" Door**

Part Number Finish  
**11-2132B Med. Bronze Anodized**  
**11-2132C Clear Anodized**  
 Material: Aluminum  
 Stock Length: 22'  
 Unit: Foot Bulk: 66 Ft.  
 Used By: Zimmcor



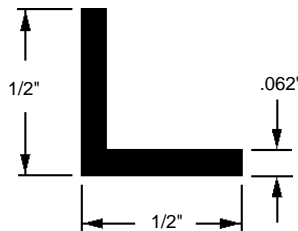
**Pocket Filler**

Part Number Finish  
**11-2134B Med. Bronze Anodized**  
**11-2134C Clear Anodized**  
 Material: Aluminum  
 Stock Length: 22'  
 Unit: Foot Bulk: 66 Ft.  
 Used By: Zimmcor



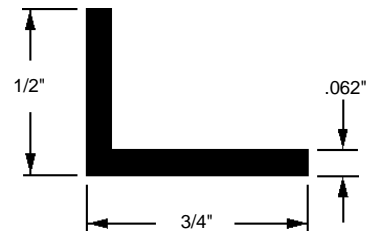
**Transom Stop**

Part Number Finish  
**11-2135B Med. Bronze Anodized**  
**11-2135C Clear Anodized**  
 Material: Aluminum  
 Stock Length: 22'  
 Unit: Foot Bulk: 66 Ft.  
 Used By: Zimmcor



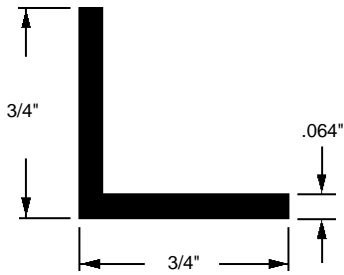
**L Angle**

Part Number Finish  
**11-2136B Med. Bronze Anodized**  
**11-2136C Clear Anodized**  
 Material: Aluminum  
 Stock Length: 22'  
 Unit: Foot Bulk: 66 Ft.  
 Used By: Several Manufacturers



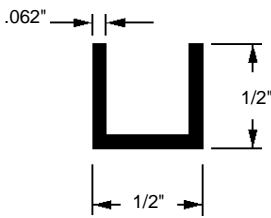
**L Angle**

Part Number Finish  
**11-2137B Med. Bronze Anodized**  
**11-2137C Clear Anodized**  
 Material: Aluminum  
 Stock Length: 22'  
 Unit: Foot Bulk: 66 Ft.  
 Used By: Several Manufacturers



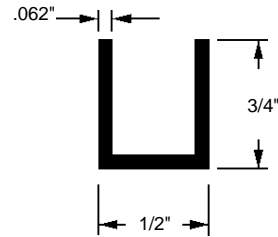
**L Angle**

Part Number Finish  
**11-2138B Med. Bronze Anodized**  
**11-2138C Clear Anodized**  
 Material: Aluminum  
 Stock Length: 22'  
 Unit: Foot Bulk: 66 Ft.  
 Used By: Several Manufacturers



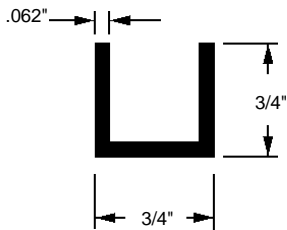
**U Channel**

Part Number Finish  
**11-2158B Med. Bronze Anodized**  
**11-2158C Clear Anodized**  
 Material: Aluminum  
 Stock Length: 22'  
 Unit: Foot Bulk: 66 Ft.  
 Used By: Several Manufacturers



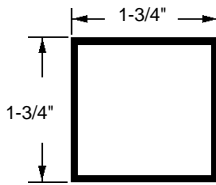
**U Channel**

Part Number Finish  
**11-2159B Med. Bronze Anodized**  
**11-2159C Clear Anodized**  
 Material: Aluminum  
 Stock Length: 22'  
 Unit: Foot Bulk: 66 Ft.  
 Used By: Several Manufacturers



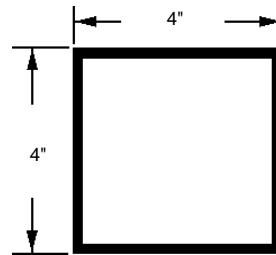
**U Channel**

Part Number Finish  
**11-2160B Med. Bronze Anodized**  
**11-2160C Clear Anodized**  
**11-2160M Mill**  
 Material: Aluminum  
 Stock Length: 22'  
 Unit: Foot Bulk: 66 Ft.  
 Used By: Several Manufacturers



**Box Tubing**

Part Number Finish  
**11-2156B Med. Bronze Anodized**  
**11-2156C Clear Anodized**  
 Material: Aluminum  
 Stock Length: 22'  
 Unit: Foot Bulk: 22 Ft.  
 Used By: Several Manufacturers



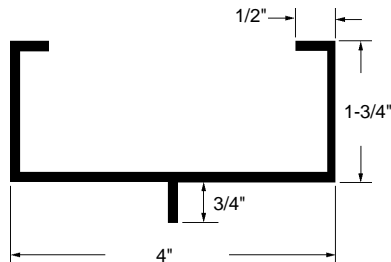
**Box Tubing**

Part Number Finish  
**11-2157B Med. Bronze Anodized**  
**11-2157C Clear Anodized**  
 Material: Aluminum  
 Stock Length: 22'  
 Unit: Foot Bulk: 22 Ft.  
 Used By: Several Manufacturers



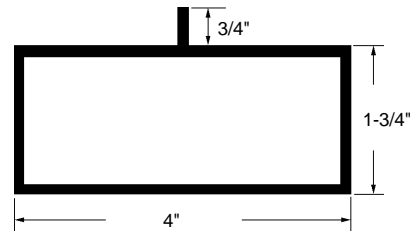
**Closed Back Tube**

Part Number Finish  
**11-2161B Med. Bronze Anodized**  
**11-2161C Clear Anodized**  
 Material: Aluminum  
 Stock Length: 22'  
 Unit: Foot Bulk: 22 Ft.  
 Used By: Several Manufacturers



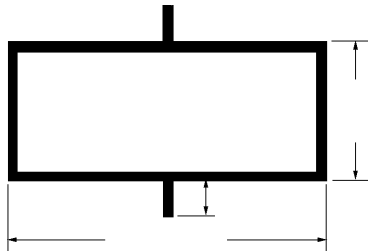
**Open Back Fin Tube**

Part Number Finish  
**11-2153B Med. Bronze Anodized**  
**11-2153C Clear Anodized**  
 Material: Aluminum  
 Stock Length: 22'  
 Unit: Foot Bulk: 22 Ft.  
 Used By: Several Manufacturers



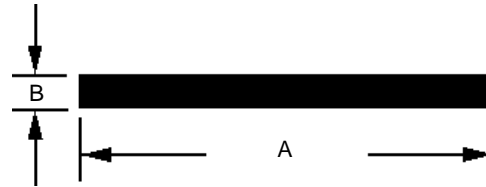
**Closed Back Fin Tube**

Part Number Finish  
**11-2154B Med. Bronze Anodized**  
**11-2154C Clear Anodized**  
 Material: Aluminum  
 Stock Length: 22'  
 Unit: Foot Bulk: 22 Ft.  
 Used By: Several Manufacturers



**Double Fin Tube**

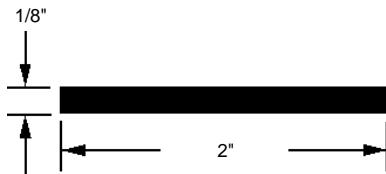
Part Number Finish  
**11-2155B Med. Bronze Anodized**  
**11-2155C Clear Anodized**  
 Material: Aluminum  
 Stock Length: 22'  
 Unit: Foot Bulk: 22 Ft.  
 Used By: Several Manufacturers



**Flat Bar**

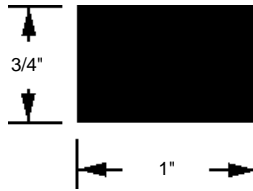
Part Number	Finish	A	x	B
<b>11-2141B</b>	<b>Med. Bronze Anodized</b>	<b>3/16"</b>		<b>1"</b>
<b>11-2141C</b>	<b>Clear Anodized</b>	<b>3/16"</b>		<b>1"</b>
<b>11-2142M</b>	<b>Mill</b>	<b>1/4"</b>		<b>1-1/2"</b>
<b>11-2143B</b>	<b>Med. Bronze Anodized</b>	<b>3/16"</b>		<b>2"</b>
<b>11-2143C</b>	<b>Clear Anodized</b>	<b>3/16"</b>		<b>2"</b>

Material: Aluminum  
 Stock Length: 24'  
 Unit: Foot Bulk: 24 Ft.  
 Used By: Several Manufacturers



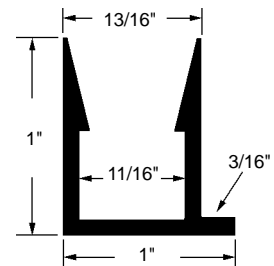
**Flat Bar**

Part Number Finish  
**11-2139B Med. Bronze Anodized**  
**11-2139C Clear Anodized**  
 Material: Aluminum  
 Stock Length: 24'  
 Unit: Foot Bulk: 24 Ft.  
 Used By: Several Manufacturers



**Flat Bar**

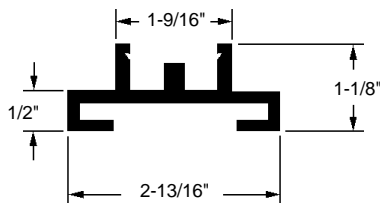
Part Number Finish  
**11-2140B Med. Bronze Anodized**  
**11-2140C Clear Anodized**  
 Material: Aluminum  
 Stock Length: 22'  
 Unit: Foot Bulk: 22 Ft.  
 Used By: Several Manufacturers



**Window Stop**

Part Number Finish  
**11-2126 Clear Anodized**  
 Material: Aluminum  
 Stock Length: 16'  
 Unit: Foot Bulk: 80 Ft.  
 Used By: Several Manufacturers

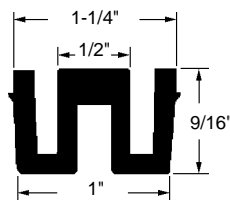
•Rigid vinyl track, 11-2164, available separate (on this page).



**Sliding Door Bottom Track**

Part Number  
**11-2165**  
 Material: Aluminum  
 Finish: Mill  
 Stock Length: 22'  
 Unit: Foot Bulk: 66 Ft.  
 Used By: Zimmcor

•Bottom track, 11-2165, available (on this page).



**Rigid Vinyl Track for 11-2165**

Part Number  
**11-2164**  
 Material: Rigid Vinyl  
 Stock Length: 22'  
 Unit: Foot Bulk: 66 Ft.  
 Used By: Zimmcor

